

# Italian Style Sale

**Venerdì 30 ottobre 2015 18,30 - Fiera di Cremona**

Nel programma della Mostra Nazionale 2015 organizzata da ANAFI

**Friday, October the 30th 2015, Cremona, Italy**

During the Italian National Show 2015 organized by Anafi

[WWW.ITALIANSTYLESALE.COM](http://WWW.ITALIANSTYLESALE.COM)

Sale organisation:

**Semenzoo.italy**



ANAFI



# EUDON

GO-FARM ROYAL EUDON ET TV TL  
IT019990815781

MILLION X SHOTTLE X O-MAN

Royal Eudon Ballata VG86





# **WIDE, DEEP and STRONG** *italian style*

## **EUDON: To build long-lasting cows.**

*gpft 2555 milk 923kgs*  
*daughters 326*  
*herds 166*  
*type 3.32*  
*udc 3.98*  
*pl 115*



**Royal Eudon Vendemmia VG86 2yr**



**Royal Eudon Elizabeth GP83 2yr**



**Go-Farm Eudon Rachel VG86 2yr**



**Semenzoo**  **italy**

[www.semenzoo.it](http://www.semenzoo.it) ~ [semenzoo@semenzoo.it](mailto:semenzoo@semenzoo.it)



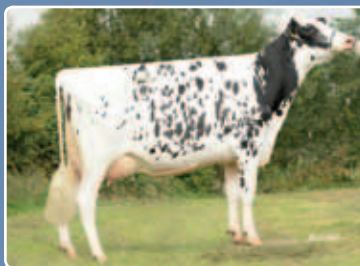
# W

E'LL OPEN UP THE WORLD TO YOUR GENETICS

Some examples of genetics delivered through one of the Eurogenes Sales:



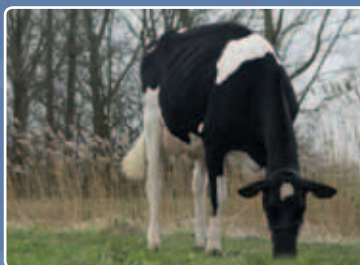
**Eclipse Atwoods Archrival I #1 PTAT bull World Wide!!**  
Sold as an embryo through the EG Online Embryo Sale



**Drouner AJDH Cosmo VG-87 2yr.**  
Already >7 sons in AI, grand son > 2700 GTPI  
Sold through the EG Online Heifer Sale



**Twin Sheray 2 VG-85-NL 3yr.**  
Dam to the #3 GTPI heifer: GTPI +2583  
Sold through the EG Online Heifer Sale



**Rainyridge Planet Elaine VG-88 2yr.**  
Dam to the #1 GTPI RC heifer in Europe  
Sold through the EG Summer Sale



**Vekis Sudan Mellow VG-87 2yr.**  
Dtrs sold for € 70.000 & € 84.0000  
Mellow sold through the Holland Masters Sale

# U

## PCOMING EVENTS

17 - 24 June

21 August

9 October

Every 2 weeks

24/7

**Eurogenes Online Summer TAG+ Sale - [www.eurogenes.com](http://www.eurogenes.com)**

**Vente Drakkar - Honfleur, France** (Open for consignments now!)

**German Masters Sale - Bitburg, Germany** (Open for consignments now!)

**Eurogenes Online Embryo Sale, Online @ [www.eurogenes.com](http://www.eurogenes.com)**

**Embryo Webshop, Online @ [www.shopembryo.com](http://www.shopembryo.com)**

Consign your embryos and heifers now for these upcoming sales through one of the contactpersons on: [WWW.EUROGENES.COM](http://WWW.EUROGENES.COM)



LATEST GLOBAL BREEDING NEWS - **THE BREEDER PLATFORM** -  
ONLINE EMBRYO SALES - **TOP RANKING GENOMIC LISTS ONLINE** - LIVE  
HEIFER SALES - **THE HOTSPOTS MAGAZINE** - HUGE PEDIGREE DATABASE WITH  
EUROPE'S BEST DONORS - **EMBRYO WEBSHOP & MUCH MORE**

# [WWW.EUROGENES.COM](http://WWW.EUROGENES.COM)



# BENVENUTI / WELCOME

*C*ari allevatori,

Abbiamo il piacere di presentarvi il catalogo della prima Italian Style Sale.

L'Italia è globalmente riconosciuta come un paese di grande tradizione nella selezione Holstein; molte delle migliori famiglie di vacche italiane stanno influenzando la razza attraverso le loro discendenze maschili e femminili.

L'asta Italian Style Sale propone alcune delle migliori manze e vacche provenienti da famiglie italiane affermate a livello globale, così come interessantissimi soggetti provenienti da altri paesi ma tutti testati per genomica anche in Italia.

Ci preme ringraziare gli allevatori che hanno messo a disposizione le loro migliori individualità rendendo possibile questa eccellente selezione di lotti per la prima Italian Style Sale.

Un ringraziamento speciale ad ANAFI per la fiducia nell'affidarci la gestione di quest'asta e SEMENZOO ITALY per il grande supporto ed aiuto.

Vi diamo appuntamento a venerdì 30 ottobre a Cremona, presso lo stand Italian Style Sale.

*I* nostril migliori saluti,

Italian Style Sale staff

*D*ear breeders,

We are very excited to present you the catalogue of the first Italian Style Sale.

Italy has a global image as a tremendous Holstein country, many of the Italian cow families are making a global influence through cow families and through sires they delivered and developed!

The Italian Style Sale contains some of the most interesting and very best heifers and cows from the Italian cow families with Global fame, as well interesting heifers from different countries which are all tested in the Italian sale system.

We want to thank the consignors which entered their very best and made it possible to make this great selection we have for the first Italian Style Sale.

As well we want to thank the herd book Anafi for the confidence to organize the sale and for the great support and help from Semenzoo.

We look forward to see you all on Friday, October the 30th in Cremona, Italy at the Italian Style Sale.

*B*est regards,

Sale organisation Italian Style Sale

Sale organisation:

**Semenzoo**.italy



ANAFI





# SALE INFO

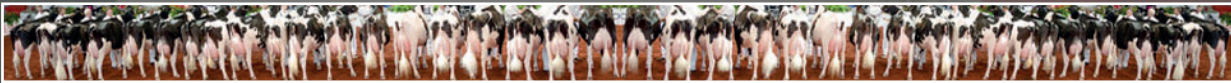
## ADDRESS

Cremonafiore - Piazza Ennio Zelioli Lanzini 1 - 26100 Cremona - Italy

## PROGRAM

Wednesday 28th October until Saturday 31th October  
Friday 30th October  
Saturday 31th October

ITALIAN NATIONAL SHOW  
06:30 PM ITALIAN STYLE SALE  
National Holstein Show - Cows



Visit [www.anafi.it](http://www.anafi.it) for the complete program

## CONTACT INFO

|                |                     |                    |                                |
|----------------|---------------------|--------------------|--------------------------------|
| Italy          | Giuseppe Beltramino | +39 (0)3487113141  | giuseppe@semenzoo.it           |
| Italy          | Cesare Fochi        | +39 (0)372474225   | cesarefochi@anafi.it           |
| Italy          | Corrado Zilocchi    | +39 3356165414     | corradozilocchi@anafi.it       |
| Netherlands    | Jan de Vries        | +31 (0)6 26250502  | jandevries@diamond-genetics.nl |
| Netherlands    | Arjan van der Vlis  | +31 (0)6 43985150  | arjan@eurogenes.nl             |
| Netherlands    | Jan Postma          | +31 (0)6 42778550  | janpostma@diamond-genetics.nl  |
| Netherlands    | Roelof Dekker       | +31 (0)6 44016220  | roelof@eurogenes.nl            |
| Italy          | Angelo Pozatti      | +39 (0)3356776396  | apo@swissgenetics.ch           |
| Italy          | Carlo Valsecchi     | +39 (0)335274512   | carlo@gapts.it                 |
| Germany        | Nici Nosbisch       | +49 (0)1714368388  | nici_nosbisch@web.de           |
| Germany        | Andreas Middelkamp  | +49 (0) 1711979157 | amiddelkamp@holsteinsselect.de |
| United Kingdom | Alison Maddrell     | +44 (0)7748960267  | alison@diamondgenetics.co.uk   |
| France         | Jan van den Oord    | +33 (0)679961625   | jan.vdo@diamond-genetics.fr    |
| France         | Louis Jacquin       | +33 (0)683803325   | louis@eurogenes.nl             |
| Spain          | Pablo Reboiro       | +34 627812012      | pablo@eurogenes.com            |
| Belgium        | Ivo Hulsbosch       | +32 (0)496614477   | roccafarm@skynet.be            |
| Ireland        | Joseph O'Callaghan  | +353 862607445     | mapleridge1@gmail.com          |

Auctioneer  
Pedigrees

Giuseppe Beltramino  
Roger Turner & Cesare Fochi

## TRANSPORT - EXPORT

All animals do qualify for export to all European countries. Diamond Genetics will take care of the export until the final destination. Contact us for more information and export prices. Tel. +31 (0)6 43985150 - Email. [info@eurogenes.nl](mailto:info@eurogenes.nl)







Go-Farm Scolari Corinne | Full sister to this lot



Dam: GP Clear Answer VG-87-IT



3rd dam: Clear-Echo 822 Ramo 1200 EX-94-USA

01.

## Go-Farm Classy


Reg.no  
Consignor



IT 019991072231  
Go-Farm Holsteins

D.O.B.

30.11.2015

| Iscritta alla mostra Nazionale 2015 / Entered for the National Show 2015

 IT 08/15 | gPFT +2461  
+610L +0.24% +0.13% +46G +32P  
106Cell 106Long 111Fert  
1.20Arti 2.56ICM / Tipo +1.90

 US 08/15 | GTPI +2165  
 CA 08/15 | DGV LPI +2679

Prod. 1.11 260d 7.536kgM 4.41%F 3.60%P  
Fresh in 2nd lactation  
Will be re-scored before the sale

Royal Jeev. SCOLARI  
(Jeeves x Goldwyn)

GP Clear Answer VG-87-IT  
Conf. VG-87-IT

2.07 305d 12.621kgM 3.62% 457F 3.49% 440P  
4.00 276d 14.659kgM 2.80% 411F 3.23% 473P

- Stessa famiglia dei famosi tori Bookem & Racer / Same family as the heavily used bulls Bookem, Racer and more!

Mr. Regelcreek SHOT AL

Clear-Echo Armstead 1777 VG-87-USA  
Conf. VG-87-USA

1.11 305d 10.931kgM 3.50% 377F 3.00% 323P

- Sorella materna venduta per \$ 91.000 / Maternal sister sold for \$ 91.000
- Sorella materna di Clear-Echo MOM 2150 VG 87-USA 2yr., Nonna di #1 GTPI maschio al mondo, De-Su Delta 4900 con 2834 GTPI! / Maternal sister to Clear-Echo MOM 2150 VG-87-USA 2yr., grand dam of the #1 GTPI calf World Wide, De-Su Delta 4900 with GTPI +2834!

Diamond-Oak ARMSTEAD

Clear-Echo 822 Ramo 1200 EX-94-USA DOM  
Conf. EX-94-USA 3E DOM

1.11 365d 13.059kgM 4.1% 539F 3.2% 419P  
4.04 365d 17.949kgM 4.5% 808F 3.0% 534P  
7.00 305d 16.384kgM 3.8% 616F 3.5% 582P

- La sorella piena è la madre di BOOKEM / Full sister is dam to BOOKEM
- Nonna di Clear-Echo RACER / Grand dam to Clear-Echo RACER

NEXT DAMS

4e Clear-Echo Hershl D-Rac 822 VG-87-USA DOM  
5e Clear-Echo Decisn L-Rac 505 VG-86-USA GMD DOM  
6e Clear-Echo Lily Rac 264-ET GP-84-USA DOM  
7e Clear-Echo Jab Racer 45-ET GP-82-USA GMD DOM  
8e Clear-Echo Mascot Racer-ET GP-82-USA 3yr.

## Vacca eccezionale dalla Clear-Echo family

Una delle prime figlie di Scolari da una famiglia internazionale, fresca di secondo parto mette in mostra grandissime potenzialità! Un outcross pedigree e andando indietro si trova una delle migliori vacche di fondazione della razza: Clear-Echo Ramo 122, ascendente di tori come Bookem, Racer e molti altri!

## Great cow from the Clear-Echo family

A great 2nd calver by Scolari, just fresh in 2nd lactation and she looks GREAT! An outcross pedigree and going back one of the greatest brood cows in the breed: Clear-Echo Ramo 122, foundation behind bulls like Bookem, Racer and many others!





Dam: Tir-An N.U. Nyala



Tirsvad BT Noma VG-89-DK 2yr. (MAX)



Tirsvad Stol Joc Nemo VG-87-DK 2yr.


02.


## DG R Nourya


Reg.no  
Consignor

NL 747281272  
Diamond Genetics & Rijnhof Holsteins

Reg.no 11.06.2015

 **IT 08/15 | gPFT +3913**  
+1929L -0.04 +0.18 +68G +84P  
107Cell 115Long 107Fert  
3.98Arti 3.23ICM / Tipo +2.54

 **US 09/15 | GTPI +2553**  
+1092M +0.03% +0.08% +50F +54P  
+4.1PL 2.76SCS +1.7DPR 8.4SCE 643NM  
+1.64UDC +2.00FLC / PTAT +2.06

 **DE 08/15 | RZG 161 (#2 RZG Powerball)**  
+999M +0.00% +0.24% +39F +58P RZM 133  
RZS 124 / RZD 107 / RZN 133 / RZR 128 /  
Fund 122 / Eut 131 / RZE 133

**View-Home POWERBALL-P**  
(Earnhardt x Robust)

**Tir-An N.U. Nyala**  
Due. October 2015

- **Venduta per 84.000 EUR** / Sold for 84.000 EUR
- **Eccezionale vacca di fondazione**  
/ Incredible brood cow
- **Madre di tori come:** / Dam to bulls like:
  - **Bailando @ Vost (s. Balisto)**  
#10 RZG bull from Germany (RZG 160)
  - **R DG Nikkelback (s. Missouri)**
- **2 figli di Powerball andranno in F.A.** /  
2 Powerball sons are going to AI

**Amighetti NUMERO UNO**

**Tirsvad BT Noma VG-89-DK 2yr. (MAX)**  
Conf. VG-89-DK EX-MS (MAX)

La1 305d 12.953kgM 4.2% 544F 3.4% 440P

- **Madre di LEXINGTON, già primo toro RZG Germania** / Dam to LEXINGTON, former #1 RZG Bull in Germany
- **Madre di Leno, Loback & altri** /  
Dam to Leno, Loback & more

**Klassic BIG TIME**

**Tirsvad Stol Joc Nemo VG-87-DK 2yr.**  
Conf. VG-87-DK 2yr.

La1 305d 13.999kgM 3.3% 456F 3.2% 449P

- **#3 GTPI Stol Joc in Europa** /  
#3 GTPI Stol Joc in Europe
- **Sua sorella piena è la madre di Beauty presso OHG** / Her full sister is dam to Beauty at OHG

**NEXT DAMS**

- 4e Tir-An Oman Neblina VG-87-DK 2yr.
- 5e BW Marshall Neblina VG-87-NL 2yr.
- 6e Etazon LL Neon-ET VG-85
- 7e Tui Onyx Nick VG-86-USA 2yr. GMD DOM  
x VG-89-USA x VG-86-USA

## Prima manza al mondo per PFT

E' la prima manza al mondo per GPFT con+ 3913 gPFT, combinato con +2553 GTPI, DGV LPI +3476 e ben 161 RZG (#2 RZG Powerball)! Dicendente dall'eccezionale vacca di fondazione Nyala, molteplici figli in F.A. e molte figlie ai primi posti nelle classifiche di diversi paesi.

## The #1 gPFT heifer World Wide

The #1 gPFT heifer World Wide with 3913 gPFT, combined with +2553 GTPI, DGV LPI +3476 and 161 RZG (#2 RZG Powerball)! From the incredible brood cow Nyala, multiple sons in AI and several dtrs in the top rankings in different systems!!





Dam: Tir-An N.U. Nyala



Bailando @ Vost | (Balisto x Tir-An N.U. Nyala)  
#10 RZG bull in Germany, RZG 160



3rd dam: Tirsvad Stol Joc Nemo VG-87-DK 2yr.


03.


## R DG Netty


Reg.no  
Consignor

NL 758140256  
Diamond Genetics & Rijnhof Holsteins

Reg.no 12.02.2015

 IT 08/15 | gPFT +3365  
+1855L -0.02 +0.02 +63G +64P  
109Cell 116Long 104Fert  
3.87Arti 3.09ICM / Tipo +2.82

 US 08/15 | GTPI +2523  
+1720M +0.00% +0.02% +63F +56P  
+4.7PL 2.71SCS +1.1DPR 8.3SCE 675NM  
+1.31UDC +1.31FLC / PTAT +1.91

 DE 08/15 | RZG 154  
+1588M +0.00% +0.24% +44F +52P RZM 131  
RZS 121 / RZD 102 / RZN 137 / RZR 130 /  
Fund 127 / Eut 129 / RZE 137

**Cogent SUPERSHOT**  
(Supersire x Superstition)

Tir-An N.U. Nyala  
Due. October 2015

- **Venduta per 84.000 EUR** / Sold for 84.000 EUR
- **Eccezionale vacca di fondazione**  
/ Incredible brood cow
- **Madre di tori come:** / Dam to bulls like:
  - **Bailando @ Vost (s. Balisto)**  
#10 RZG bull from Germany (RZG 160)
  - **R DG Nikkelback (s. Missouri)**
- **2 figli di Powerball andranno in F.A.** /  
2 Powerball sons are going to AI

**Amighetti NUMERO UNO**

Tirsvad BT Noma VG-89-DK 2yr. (MAX)  
Conf. VG-89-DK EX-MS (MAX)

La1 305d 12.953kgM 4.2% 544F 3.4% 440P

- **Madre di LEXINGTON, già primo toro RZG Germania** / Dam to LEXINGTON, former #1 RZG Bull in Germany
- **Madre di Leno, Loback & altri** /  
Dam to Leno, Loback & more

**Klassik BIG TIME**

Tirsvad Stol Joc Nemo VG-87-DK 2yr.  
Conf. VG-87-DK 2yr.

La1 305d 13.999kgM 3.3% 456F 3.2% 449P

- **#3 GTPI Stol Joc in Europa** /  
#3 GTPI Stol Joc in Europe
- **Sua sorella piena è la madre di Beauty presso OHG** / Her full sister is dam to Beauty at OHG

**NEXT DAMS**

4e Tir-An Oman Neblina VG-87-DK 2yr.  
5e BW Marshall Neblina VG-87-NL 2yr.  
6e Etazon LL Neon-ET VG-85  
7e Tui Onyx Nick VG-86-USA 2yr. GMD DOM  
x VG-89-USA x VG-86-USA

**Grande combinazione di indici dalle Nyala's**  
Grandissima combinazione di indici dalla famiglia delle Nyala's!  
Molteplici fratelli in FA venduti per prezzi alti, e molte figlie al top in diverse classifiche! Netty ha +3365 gPFT e >2500 GTPI! La madre è stata venduta per EUR 84.000 ed è la sorella maternal del toro ex #1 RZG Lexington!

**Great index combination from the Nyala's**  
Huge index combination out of the Nyala's! Several brothers in AI and sold for high prices and several dtrs in different top rankings! Netty has +3365 gPFT and >2500 GTPI! Dam sold for EUR 84.000 and is as well the maternal sister of the former #1 RZG bull Lexington!





M.E.DAL Stormatic Ilma EX-95-IT | Dam



M.E.DAL Stormatic Ilma EX-95-IT



Grand dam: M.E.DAL Rudolph Ilary EX-91-IT

04.

## M.E.Dal Goldsun *Isabel* VG-IT 2yr.

Reg.no  
Consignor

IT019990876282  
M.E.Dal Farm Ladina S.S. CR

D.O.B.

01-08-2012

Production

2.02 261d 7.229kgM 3.5% 3.2%P

Conformation

VG-85-IT 2yr.

ISABEL is fresh again in her 2nd lactation and looks GREAT! / ISABEL is fresh again in her 2nd lactation and looks GREAT!

**Toc-Farm GOLDSUN**  
(Goldwyn x Toc-Farm Allen Amyly)

**M.E.Dal Stormatic Ilma EX-95-IT**  
Due. EX-95-IT

2.01 305d 11.160kgM 4.0% 444F 3.0% 333P  
3.00 305d 13.396kgM 3.9% 522F 3.0% 398P  
6.00 305d 14.566kgM 3.8% 550F 2.9% 421P  
7.10 305d 13.942kgM 4.1% 565F 2.9% 399P  
Lifetime: 5La 74.422kgM 3.8%F 3.0%P

- Sr. Champion & Best Udder Cremona '12
- Int. Champion European Show Cremona '10
- Res. Champion National Show Cremona '10
- HM. Jr. Champion National Show Cremona '09

**Braedale GOLDWYN**

**M.E.DAL Rudolph Ilary EX-91-IT**  
Conf. EX-91-IT

2.05 305d 10.159kgM 3.50% 357F 3.10% 313P  
7.09 305d 13.368kgM 4.64% 620F 2.90% 388P  
Lifetime: 94.791kgM 4.31%F 3.00%P

- **Incredibile vacca di fondazione**  
/ Incredible brood cow

**Startmore RUDOLPH**

**M.E.DAL Raider Jewel VG-87-IT**  
Conf. VG-87-IT

4/4LA 8.503kgM 4.1% 352F 3.3% 281P  
HL 3 9.448kgM 4.1% 387F 3.4% 320P

- Res. Jr. Champion National Show Cremona '96
- Maternal sister to M.E.Dal Starbuck Janet EX-95, Res. Sr. Champion Nat. Show 2000 / Maternal sister to M.E.DAL Starbuck Janet EX-95, Res. Sr. Champion Nat. Show 2000

**NEXT DAMS**

- 4e A.E. Inspiration Janette EX-93-IT  
Lifetime: 79.357 kg Milk
- 5e Sace Elevation Janet J. EX-96-IT 2E  
Lifetime: 52.833 kg Milk
- 6e Flettdale Marquet Janet EX-94

### *P*uro tipo

Un concentrato di selezione per tipo in questa bellissima giovane vacca. Fresca di secondo parto Isabel è pronta per le più importanti mostre del 2016. Il padre Goldsun è un re dei ring, la madre, M.E.DAL Stormatic Ilma, una Regina.

### *P*ure type

Type at its highest levels in the pedigree of this amazing young cow. Just fresh in second lactation Isabel is ready to attend the main shows in 2016. Her sire Goldsun is a King of the rings: her dam, M.E. DAL Stormatic Ilma, a Queen.





Dam: M.E. DAL Goldwyn Icon VG-88-IT | Dam



M.E.DAL Stormatic Ilma EX-95-IT  
Maternal sister to dam



M.E.Dal Stormatic Ilma EX-95-IT

05.

## M.E.Dal Absolute Icony \*RC

Reg.no  
Consignor

IT 019991136262  
M.E.Dal Farm Ladina S.S.

D.O.B.

07-11-2014

SHOW

Iscritta Mostra Nazionale Cremona 2015 / Entered for the National Show in Cremona 2015

**Apple ABSOLUTE-RED**  
(Talent x KHW Regiment Apple Red)

**M.E.DAL Goldwyn Icon VG-88-IT**  
Due. VG-88-IT

2.01 305d 10.676kgM 4.41% 471F 3.36% 359P  
3.11 305d 12.914kgM 3.40% 439F 3.12% 403P

- **Riserva 2 JR Cremona 2012** /  
Res. 2yr. Old Champion Cremona 2012

**Braedale GOLDWYN**

**M.E.DAL Rudolph Ilary EX-91-IT**  
Conf. EX-91-IT

2.05 305d 10.159kgM 3.50% 357F 3.10% 313P  
7.09 305d 13.368kgM 4.64% 620F 2.90% 388P  
Lifetime: 94.791kgM 4.31%F 3.00%P

- **Incredibile vacca di fondazione**  
/ Incredible brood cow
- **Madre di:** / Dam to:  
M.E.DAL Stormatic Ilma EX-95-IT  
- Sr. Champion & Best Udder Cremona '12  
- Int. Champion European Show Cremona '10  
- Res. Champion National Show Cremona '10  
- HM. Jr. Champion National Show Cremona '09

**Startmore RUDOLPH**  
**M.E.DAL Raider Jewel VG-87-IT**  
Conf. VG-87-IT

4/4LA 8.503kgM 4.1% 352F 3.3% 281P  
HL 3 9.448kgM 4.1% 387F 3.4% 320P

- **Res. Jr. Champion National Show Cremona '96**
- **Maternal sister to M.E.Dal Starbuck Janet EX-95, Res. Sr. Champion Nat. Show 2000** /  
Maternal sister to M.E.DAL Starbuck Janet EX-95,  
Res. Sr. Champion Nat. Show 2000

**NEXT DAMS**

4e A.E. Inspiration Janette EX-93-IT  
Lifetime: 79.357 kg Milk  
5e Sace Elevation Janet J. EX-96-IT 2E

*V*itella da show da una famiglia spettacolare

Una vitella RED CARRIER da mostra figlia di Absolute e della riserva 2 anni junior della Nazionale 2012: Icon!! Sorella materna della Campionessa Nazionale ed Europea M.E.DAL Stormatic Ilma! Icony è iscritta alla Mostra Nazionale di Cremona 2015!!

*S*how heifer from awesome family

A RED CARRIER show heifer by Absolute out of the Res. 2yr. Old Champion of Cremona 2012: Icon!! Maternal sister to the European and multiple National Champion M.E.DAL Stormatic Ilma! Icony is entered for the National Show in Cremona!!





All-Dea Goldreams Ter Lolly | SHE SELLS

06.

## All-Dea Goldreams Ter *Lolly*

Reg.no  
Consignor

IT 024990479743  
De Antoni G. Battista E Figli Sas

D.O.B. 16-12-2014

SHOW RESULTS  
SHOW

Res. Jr. Champion Gonzaga Show 2015  
Iscritta Mostra Nazionale Cremona 2015 / Entered for the National Show in Cremona 2015

**Heavenly GOLDEN DREAMS**  
(Goldwyn x MD-Delight Durham Atlee)

**All-Dea Lolita EX-91-IT**  
Conf. EX-91-IT

2.04 282d 12.737kgM 3.12% 398F 3.38% 430P  
3.04 301d 12.377kgM 3.93% 487F 3.56% 441P  
--> Currently in 6th lactation

**Innwood TERRASON**

**Convincer Lola VG-89-IT**  
Conf. VG-89-IT

1.09 305d 9699kgM 3.48% 338F 3.68% 357P  
4.10 305d 12.487kgM 3.46% 432F 3.35% 418P

**Wa-Del CONVINCER**

**Bellwood Ecl VG-86-IT**  
Conf. VG-86-IT

5.08 305d 10.408kgM 3.77% 392F 3.31% 345P  
Lifetime: 46.769kgM 3.9%F 3.4%P

**NEXT DAMS**

- 4e Aerostar Aiska VG-86-IT (s. Aerostar)  
Lifetime: 5La 54.433kgM 3.8%F 3.2%P
- 5e Secr Uca VG-85-IT (s. Secret)  
Lifetime: 71.598kgM 4.2%F 3.3%P
- 6e Valiant Perla VG-86-IT (s. Valiant)

### *G*iovane Campionessa con pedigree profondo

Lolly sarà in mostra anche alla Nazionale di Cremona!! Proveniente da una profonda famiglia italiana, vanta nel suo certificato grandi tori e molteplici generazioni di vacche MB o Eccellente con strepitose produzioni in carriera!

### *C*how winner from deep family

Lovely Golden Dreams heifer which already was Reserve Champion at the show in Gonzaga this year! She is entered for the show in Cremona as well!! She comes from a deep Italian cow family with multiple generations VG or Excellent, great sires in the pedigree and high lifetime productions!





ALL.Nure Supersire Eleonor | Dam



Savage-Leigh Leona EX-96-USA | Same family



Savage-Leigh Licorice EX-92-USA | Same family


07.


## DG ALBERO *Eviane*


Reg.no  
Consignor

NL 653401212  
Diamond Genetics & AL.Be.Ro Holsteins

Reg.no 08.06.2015

 IT 08/15 | gPFT +3309  
+1779L +0.15 +0.18 +82G +78P  
98Cell 117Long 105Fert  
2.85Arti 2.10ICM / Tipo +2.01

 US 10/15 | GTPI +2496  
+1338M +0.07% +0.07% +71F +60P  
+4.6PL 3.04SCS +1.5DPR 7.8SCE 674NM  
+1.09UDC +0.75FLC / PTAT +1.44

 CA 08/15 | DGV LPI +3290  
+2010M +0.23 +0.23 +99F +91P  
111HL 3.06SCS 107Fert 100CA  
+7FL +9MS / Conf. +9

View-Home POWERBALL-P  
(Earnhardt x Robust)

AL.Nure Supersire Eleonor

- Grande ramo della Savage-Leigh Bellwood Linda! / Great branch from Savage-Leigh Bellwood Linda!
- Moltissime progenie alte nelle classifiche / One of the highest GTPI Supersire dtrs from her generation
- Molti discendenti ai vertici delle classifiche / Several high ranking offspring
- Un figlio con Montross venduto per EUR 30.000 / Montross son sold for EUR 30.000

Seagull-Bay SUPERSIRE

ALL.Nure (197) VG-87-IT 2yr.  
Conf. VG-87-IT 2yr.

2.07 305d 13.049kgM 3.3% 424F 3.0% 391P

Long-Langs MAN-O-MAN

ALL.Nure Elegant Bullestar EX-90-IT  
Conf. EX-90-IT

2.01 305d 12.188kgM 3.9% 479F 2.9% 356P  
3.07 305d 15.092kgM 3.7% 557F 2.8% 424P  
5.08 305d 17.614kgM 4.1% 726F 2.8% 498P

NEXT DAMS

- 4e Savage-Leigh Louise EX-94-USA
- 5e Savage-Leigh Bellwood Linda EX-92-USA GMD DOM
- 6e Savage-Leigh Star Linda VG-87-USA 3yr. GMD DOM
- 7e Savage-Leigh Glenview Linda EX-90-USA GMD DOM
- 8e Savage-Leigh Lindas Chairman GP-84
- 9e Savage-Leigh Creek Lydia VG-88
- 10e Savage-Leigh Kate Linda VG-85
- 11e Milk-Key Bootmaker Grace Ann EX-91-USA GMD DOM

## Grandi indici dalla famiglia di Licorice

Un'ottima vitella dagli indici completi dalla famiglia di Savage-Leigh con molte generazioni allevate presso ALL.Nure Holsteins! La madre ALL.Nure Supersire Eleonor è un eccezionale soggetto con già 4 figli e figlie >2600 GTPI dei quali uno già venduto per EUR 30.000

## Great index of the Licorice family

Great complete index heifer of the Savage-Leigh family with several generations in between bred at ALL.Nure Holsteins, Italy! Dam ALL.Nure Supersire Eleonor is a tremendous individual with already 4 sons and dtrs >2600 GTPI from which one sold already for EUR 30.000





Larcrest Crimson EX-93-USA | Maternal sister to grand dam



Tirsvad Freddie Cosmopolitan | Grand dam



4 generations of the Larcrest cow family

08.

## Go-Farm *Karaoke*

Reg.no  
Consignor

IT 019991384575  
Go-Farm Holsteins

D.O.B.

19-07-2015



IT 08/15 | gPFT +3187  
+1899L +0.21% +0.04% +93G +69P  
105Cell 113Long 102Fert  
2.56Arti 2.57ICM / Tipo +2.24



US 09/15 | GTPI +2616  
+1773M +0.08% +0.02% +88F +58P  
+5.3PL 2.95SCS +1.1DPR 6.2SCE 780NM  
+1.46UDC +1.51FLC / PTAT +2.09



CA 09/15 | DGV LPI +3279  
+2227M +0.34% +0.10% +116F +85P  
108HL 2.90SCS 108Fert 110CA  
+7FL +10MS / Conf. +10

Seagull-Bay SILVER  
(Mogul x Snowman)

Bouw Supersire Cathy

- La prima vacca per GTPI in Europa (>2 anni)  
/ The #1 GTPI Cow in Europe (>2 years)
- Molti fratelli e figli in FA /  
Several brothers and sons in AI
- Stessa famiglia di / Same family as  
DG Charley (#2 GTPI bull World Wide),  
Commander, Chevrolet, Contrast, Fanatic &  
many others!

Seagull-Bay SUPERSIRE

Tirsvad Freddie Cosmopolitan VG-85-NL 2yr.  
Conf. VG-85-NL VG-88-MS 2yr.

2.04 305d 10.259kgM 4.51% 463F 3.43% 351P

- Sorella materna di Larcrest Crimson EX-93  
/ Maternal sister to Larcrest Crimson EX-93

Badger-Bluff Fanny FREDDIE

Larcrest Cosmopolitan VG-87-USA La1.  
Conf. VG-87-USA La1.

2-04 2x 365d 14.030kgM 4.1% 572F 3.6% 508P

- Una delle vacche di fondazione di maggior  
successo della sua generazione /  
One of the most successful brood cows of  
her generation

NEXT DAMS

- 4e Larcrest Oside Champagne EX-90-USA GMD DOM
- 5e Larcrest Juror Chanel EX-93-USA GMD DOM
- 6e Larcrest Lindy Chandra VG-85-USA 2yr.
- 7e Larcrest Inspiration Carly VG-87-USA

## Eccezionale genomica dalle Larcrest's

Una vitella al top delle classifiche discendente dalla famiglia di Larcrest Cosmopolitan in vendita! Una bella figlia di Silver con un profilo incredibilmente completo: >1700 milk, +1.1 DPR, +5.3 PL, 6.2 SCE, >2 PTAT e +2616 GTPI!! La madre è la prima vacca per GTPI(>2 anni) in Europa!

## Huge genomics from the Larcrest's

A top ranking heifer out of the Larcrest Cosmopolitan family sells! A beautiful Silver dtr with a super complete profile of >1700 milk, +1.1 DPR, +5.3 PL, 6.2 SCE, >2 PTAT and +2616 GTPI!! Her dam is the #1 GTPI cow (>2yr. old) in Europe!





Castelverde Integrity Suellen EX-94-IT | Grand dam



Castelverde Champion Selina VG-86-CH 3yr.  
Maternal sister to grand dam @ Ruegruet Holsteins



4th dam: Castelverde Chief Mark Susy EX-97-IT

09.

## Castelverde Goldwyn Sharon-ET

Reg.no  
Consignor

IT 019991213970  
Castelverde Holsteins

D.O.B.

26-09-2014

SHOW

Scritta Mostra Nazionale Cremona 2015 / Entered for the National Show in Cremona 2015

**Braedale GOLDWYN**  
(James x Storm)

**Castelverde Sanchez Shery VG-89-IT**  
Conf. VG-89-IT

2.03 305d 9.744kgM 3.31% 323F 3.29% 321P  
3.06 305d 15.868kgM 3.43% 545F 3.35% 531P  
5.00 244d 8.488kgM 3.01%F 3.19%P (In progr)

• **Vacca imponente, ora in terza lattazione /**  
Huge cow, now in her 3rd lactation

**Gen-Mark Stmc SANCHEZ**

**Castelverde Integrity Suellen EX-94-IT**  
Conf. EX-94-IT

2.01 305d 11.925kgM 3.56% 424F 3.37% 402P  
4.01 305d 13.232kgM 3.70% 490F 3.26% 432P

• **SHOW RESULTS**

- Res. Grand Champion Int. Verona '09

**Robthom INTEGRITY**

**Castelverde Red M. Susan VG-86-IT**  
Conf. VG-86-IT VG-86-IT

La1 329d 10.841kgM 4.48% 486F 3.47% 376P

**NEXT DAMS**

4e Castelverde Chief Mark Susy EX-97-IT  
Res Gr Champion Cremona 99  
Lifetime: 4La 78.054kgM 4.4%F 3.5%P  
5e Castelverde Starbuck Pansy EX-90-IT  
Lifetime: 68.970kgM 4.4%F 3.8%P

### Goldwyn dalla famiglia di SUSY!!

Un'imperdibile opportunità per acquistare una figlia del leggendario Goldwyn ed accedere ad una delle più grandi famiglie della razza, la famiglia di Castelverde Mark Susy EX-97 ! Un'ottima sequenza di tori con Goldwyn su un' eccezionale Sanchez seguita dalla famosa vincitrice in mostra Suellen!

### Goldwyn out of the SUSY family!!

One of the greatest opportunities to buy a daughter of the legendary sire GOLDWYN and great opportunity to buy out of one of the greatest cow families in the breed, going back on Castelverde Chief Mark Susy EX-97-IT! Great sire stack with Goldwyn from an incredible Sanchez followed by the EX-94 successful show cow Suellen!





C.M.E. Dairyweb Gdwyn Giada VG-87-IT | Dam of this lot



Grand dam: C.M.E Dairyweb Damion Giuly EX-90-IT



3rd dam: C.M.E Dairyweb Damion Giuly EX-92-IT

10.

C.M.E. Golden Dreams *Gemma*

Reg.no  
Consignor

IT 020990921280  
Dairyweb

D.O.B.

12-06-2014

SHOW

Iscritta Mostra Nazionale Cremona 2015 / Entered for the National Show in Cremona 2015

**Heavenly GOLDEN DREAMS**  
(Goldwyn x MD-Delight Durham Atlee)

**C.M.E. Dairyweb Gdwyn Giada VG-87-IT**  
Conf. VG-87-IT

2.05 204d 6.275kgM 3.70% 232F 3.54% 222P

**Breadale GOLDWYN**

**C.M.E. Dairy Web Damion Giuly EX-90-IT**  
Conf. EX-90-IT

2.02 305d 8.065kgM 3.58% 289F 3.30% 266P  
3.10 187d 9.298kgM 3.96% 368F 3.30% 307P

- CME Dairyweb Gliuly: Campionessa riserva assoluta Nazionale Cremona '11 / Reserve Grand champion National show Cremona '11

**Erbacres DAMION**

**C.M.E. Rubens Giulia EX-92-IT**  
Conf. EX-92-IT

7.06 305d 12.313kgM 3.57% 439F 3.31% 407P  
Lifetime: 4La 64.108kgM 3.32%F 3.54%P

- s. STBVQ Rubens RC

**NEXT DAMS**

4e Aurora EX-90-IT  
Sire: Del Santo C.M. Callisto  
Lifetime: 71.790kgM 3.44%F 3.24%P

Una grande opportunità per aggiudicarsi una giovane Golden Dreams appartenente ad una delle migliori famiglie per tipo e mammella in Europa. La madre di Gemma è l'unica figlia con Goldwyn di C.M.E. Dairyweb Damion Giuly EX90 3yr. Giuly è stata l'indimenticata riserva assoluta della Nazionale 2011; una vacca dall'apparato mammario eccezionale discendente da vacche EX figlie di tori specialisti in mammella del calibro di STBVQ Rubens and Del Santo C.M. Callisto. Callisto Aurora rappresentò l'Italia al Confronto Europeo di Bruxelles 2004.

A great opportunity to get a young Golden Dreams out of one of the best show type and great udders families in Europe. Gemma dam is the only Goldwyn daughter of C.M.E. Dairyweb Giuly Ex 90 3yr. Giuly is the unforgotten Reserve Grand Champion of Cremona National Show 2011; a great udder cow backed by EX dams sired by udder specialist such us STBVQ Rubens and Del Santo C.M. Callisto. Callisto Aurora EX 90 was part of the italian team at 2004 European Championship in Bruxelles.





Rockymountain Talent Licorice EX-95-USA | Talent x Rudolph grand dtr of Lydia



Idee Lustre Ex-95-USA 3E  
Maternal sister to 3rd dam



3rd dam: Idee Rudolph Luella EX-CAN

11.

## Agrilat Brokaw *Lucia*

Reg.no  
Consignor

IT015990373657  
Alberto Locatelli

D.O.B.

16-03-2015

SHOW

Iscritta Mostra Nazionale Cremona 2015 / Entered for the National Show in Cremona 2015

**Mr. Atwood BROKAW**  
(Atwood x Mac x Regancrest-PR Barbie)

**Agrilat Promotion Lana VG-87-IT 2yr.**  
Due. VG-87-IT 2yr.

- **Stessa famiglia di:** / Same family as:  
Rockymountain Talent Licorice EX-95, Winterbay Goldwyn Lotto EX-95, Beehrow Goldwyn Lavish EX-95, Idee Goldwyn Lynley EX-92, Bosdale Gold Lustre VG-89 and more

**Mr. Derry PROMOTION**

**Fraeland Talent Luella \*RC EX-93-CAN 2\***  
Conf. EX-93-CAN EX-94-MS 2\*

2.06 365d 14.897kgM 4.0% 602F 3.4% 511P  
4.04 365d 18.509kgM 3.8% 699F 3.2% 594P  
6.04 334d 15.204kgM 3.8% 581F 3.0% 457P

- **Già 5 figlie VG in Canada ad oggi**  
/ Already 5 VG dtrs in Canada til date

**Ladino Park TALENT**

**Idee Rudolph Luella EX-CAN**  
Conf. EX-CAN EX-MS 3\*

2.04 365d 12.064kgM 3.9% 471F 3.5% 419P  
3.06 305d 12.524kgM 3.2% 397F 3.5% 440P  
4.06 365d 18.577kgM 4.5% 828F 3.2% 593P  
7.06 358d 13.070kgM 4.0% 526F 3.1% 411P

- **Nom. All-Canadian Int. 1-Yr. 1999**
- **Res. Grand Dufferin 2002**
- **Maternal sister to Idee Lustre EX-95-USA**

**NEXT DAMS**

4e Ravenswell Lydia EX-92-USA 3yr. 19\*

One of the greatest brood cows in the breed!  
x VG-CAN x VG-88 x VG-87 x EX-CAN x VG-CAN x VG-CAN

### *Stupenda* da Show dalla famiglia di Lidia

Una stupenda vitella da mostra da un ottimo ramo di una delle famiglie di maggior successo nei ring di tutti i tempi, famiglia che risale a Ravenswell Lydia EX-92-USA!! Questa splendida vitella è iscritta alla Mostra Nazionale di Cremona 2015 e rappresenta un'ottima opportunità di investimento per produrre animali da show, vendere embrioni e vincere in mostra!

### *Beautiful* show heifer from the Lidia's

A beautiful show heifer from a great branch from one of the most successful show families ever, going back on Ravenswell Lydia EX-92-USA!! This awesome heifer is entered for the National Show in Cremona and is a great investment for your herd to make show calves, to sell embryos and to win shows!





Fily Sher VG-86-FR 2yr. | Dam



Glen Drummond Splendor VG-86-CAN 2yr.



Des-Y-Gen Planet Silk \*RC EX-90-USA | Same family


12.


## DG SCHREUR *Fayen*


Reg.no  
Consignor

NL 747281171  
Diamond Genetics & Schreur Holsteins

Reg.no 24.05.2015

 IT 08/15 | gPFT +3302  
+2099L -0.07 +0.09 +70G +79P  
105Cell 117Long 103Fert  
2.98Arti 1.76ICM / Tipo +1.99

 US 10/15 | GTPI +2508  
+1925M -0.07% +0.02% +52F +62P  
+5.2PL 2.78SCS +2.1DPR 6.1SCE 698NM  
+0.90UDC +0.73FLC / PTAT +1.16

 DE 08/15 | RZG 158  
+1793M -0.06% +0.10% +65F +71P RZM 131  
RZS 116 / RZD 95 / RZN 125 / RZR 115 /  
Fund 113 / Eut 113 / RZE 118

### View-Home Day MISSOURI (Day x Robust)

Fily Sher VG-86-NL 2yr.  
Conf. VG-86-NL 2yr.

2.02 305d 10.799kgM 3.8% 409F 3.1% 335P

- **Sorella piena di Fontoy \*RC @ Evolution** / Full sister to Fontoy \*RC @ Evolution
- **Molte progenie con alti indici** / Several high progenys
- **Una figlia con Kanu P venduta per 10.000 EUR** / Kanu P dtr sold for 10.000 EUR
- **Ha ripartorito recentemente, davvero impressionante** / Calved again and looks very impressive

### Long-Langs MAN-O-MAN

Dinas Sher VG-86-FR  
Conf. VG-86-FR

2.04 305d 11.333kgM 3.8% 432F 3.2% 357P

- **Stessa famiglia di:** / Same family as: Secure-Red, Mr Savage, September Storm, Sahara \*RC, Seaguall, Durham Red, Laron P & others
- **Famiglia parente di Des-Y-Gen Planet Silk \*RC EX-90-USA, madre di Sympatico, Seneca & Stoic** / Close family to Des-Y-Gen Planet Silk \*RC EX-90-USA, dam to Sympatico, Seneca & Stoic

### Emerald-Acr Sa T BAXTER

Belis Sher VG-85-FR  
Conf. VG-85-FR

2.06 305d 11.270kgM 3.7% 412F 3.1% 346P  
3.11 305d 13.486kgM 3.8% 508F 3.1% 413P  
5.01 305d 11.929kgM 3.9% 467F 3.1% 374P

- **Sorella con Bolton venduta per \$ 104.000** / Bolton sister sold for \$ 104.000

### NEXT DAMS

4e Gen-I-Beq Durham Sherry VG-87-CAN 7\*  
5e Glen Drummond Splendor VG-86-2YR-CAN 38\*  
6e Glen Drummond Aero Flower VG-88-CAN 18\*  
7e Glen Drummond Shower EX-CAN 14\*  
8e Glen Drummond S C Jo Beth EX-CAN 2E 7\*  
9e Glen Drummond Matt Beth VG-85-CAN 4\*  
10e Glen Drummond Marquis Beth VG-CAN  
11e Ferglynn Rag Apple Bertha VG-CAN 3\*

## La Missouri #1 gPFT

La più alta figlia di Missouri per gPFT al mondo con inoltre >2500 GTPI, 157 RZG e +3258 DGV LPI!! Al momento una delle vitelle a indici più completa che si possa trovare, con un pedigree insolito: Missouri x ManO-Man x Baxter e soprattutto proveniente dalla grande Glen Drummond Splendor family!

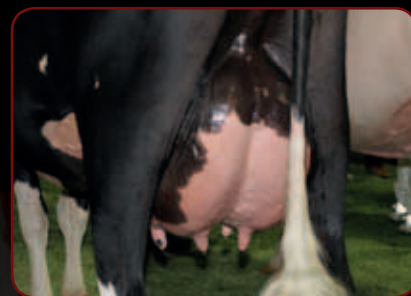
## The #1 gPFT Missouri daughter

The #1 gPFT Missouri dtr World Wide with as well >2500 GTPI, 157 RZG and +3258 DGV LPI!! One of the most complete index heifers you can find nowadays with a different pedigree, Missouri x Man-O-Man x Baxter and from the great Glen Drummond Splendor cow family!





C.M.E. Goldwyn Vanity VG-89 | Maternal sister to dam of C.M.E. Glauco Elly



Udder of: C.M.E. Glauco Elly



Maternal sister CME Goldwyn Vanity  
Jr. Milking Champion European Show Fribourg 2013

13.

## C.M.E. Glauco Elly

Reg.no  
Consignor

IT 020990814640  
Errera Holsteins

D.O.B.

26-04-2013

Production  
Show Results  
SHOW

1.10 141d 4.310kgM 3.6% 156F 3.2% 137P | Conf. VG-85-IT VG-MA 2yr.  
Res. Intermediate Champion Gonzaga Show 2015  
Iscritta Mostra Nazionale Cremona 2015 / Entered for the National Show in Cremona 2015

**Toc-Farm GLAUCO**  
(Duplex x Toc-Farm Allen Amyly)

**C.M.E. Ross Gonzaga VG-87-IT**  
Due. VG-87-IT

2.01 302d 9.640kgM 3.51% 338F 3.43% 331P  
3.01 305d 11.692kgM 3.81% 445F 3.40% 398P

- **Sorella di .M.E. Goldwyn Vanity VG-89-IT**  
**Campionessa Assoluta Regionale Gonzaga & Campionessa Vacche Giovani Confronto Europeo Fribourg '13**  
/ Sister to C.M.E. Goldwyn Vanity VG-89-IT which was Grand Champion Gonzaga Regional & Junioer Champion European Show Fribourg '13

**Plain-O DURHAM ROSS**

**C.M.E. Damion Vanity VG-87-IT**  
Conf. VG-87-IT

2.01 305d 8.970kgM 3.02% 271F 3.34% 300P  
3.02 305d 10.472kgM 3.01% 315F 3.07% 322P

**Erbacres DAMION**

**C.M.E. Vanitosa EX-93-IT**  
Conf. EX-93-IT

6.11 305d 13.958kgM 3.81% 532F 3.42% 477P  
9.01 305d 13.411kgM 3.82% 512F 3.39% 454P  
Lifetime: 8La 116.274kgM 4.0%F 3.5%P

**NEXT DAMS**

4e C.M.E. Buk-Val Valorosa VG-86-IT  
Lifetime: 5La 305d 58.755kgM 4.4%F 3.4%P

Elly è una delle giovani vacche italiane da mostra più in vista al momento. Dopo essersi piazzata terza in categoria alla Nazionale 2014 e al Dairy Show 2015, Elly è stata prima e miglior mammella 2 JR e Campionessa Riserva Vacche Giovani a Gonzaga 2015! Sua madre è la sorella materna di C.M.E. Goldwyn Vanity, campionessa tra le primipare al Confronto Europeo di Friburgo 2013! La famiglia alle sue spalle risale a C.M.E. Atreius Vanitosa EX93, una delle vacche di fondazione nell'allevamento Errera che ha fatto benissimo nelle mostre alla fine degli anni 90 e chiuso non meno di 8 lattazioni! Elly è gravida con Mascalese e partorerà alla fine di Febbraio; pronta per le più importanti mostre del 2016!

Elly is one of the hottest 2yr old show cows in Italy and she's entered for Cremona 2015. She was 3rd in her class as heifer at the National Show in Cremona 2014 and Dairy Show in Montichiari 2015. She was 1st & B.U. JR 2yr old and Intermediate Reserve Champion at Gonzaga Show 2015! Her dam is maternal sister to C.M.E. Goldwyn Vanity, the young European Champion at Fribourg 2013! She's backed by CME Atreius Vanitosa EX 93 a brood cow at Errera Holsteins which did well in many shows in the late 90's and achieve no less than 8 lactations! Elly is bred to Mascalese and due February; just ready for 2016 main shows!



# HEAVENLY GOLDEN DREAMS TL TV

UK182661300246 - aAa 234165

GOLDWYN x DURHAM x STORM

D





*italian style*

# DREAM ON



Dreams really do come true! Heavenly Golden Dreams daughters are living up to their Golden reputation making dreams come true all over the world. Dominating Junior classes both sides of the Atlantic, his daughters just get better with age.

For show winning type and breeder satisfaction, Golden Dreams is the obvious choice.

KRISMA GOLDEN DREAMS LAUSANY VG87  
AGRILAT GOLDEN DREAMS PIPPI VG89

**Semenzoo**  **italy**  
www.semenzoo.it ~ semenzoo@semenzoo.it





Toc-Farm Allen Amyly EX-95-IT | Maternal sister to 3rd dam



Grand dam: Bel Shout Samantha VG-88-IT



3rd dam: Bel Goldwyn Queen EX-92-IT

14.


## Bel Zuba ET

Reg.no  
Consignor

IT 001990838368  
Bel Holsteins

D.O.B.

21-06-2015

 IT 08/15 | gPFT +2826  
+1063L +0.21% +0.10% +62G +46P  
108Cell 113Long 109Fert  
3.00Arti 2.37CM / Tipo +2.21

**GALACTICO**  
(Galaxy x Bookem)

**Bel Mascalese Uba**

Fresca di primo parto e iscritta alla  
Nazionale 2015 / ulteriori info  
nell'aggiornamento pre-asta

Just fresh and entered for the show -  
more info in the sale update

- **Sorella piena di Bel Mascalese Uga Riserva Assoluta Manze Dairy Show Verona 2014 / Full sister to Bel Mascalese Uga Res Jr Ch Dairy Show Verona 2014**

**Zani Bolton MASCALESE**

**Bel Shout Samantha VG-88-IT**  
Conf. VG-88-IT

2.04 305d 9.156kgM 4.77% 437F 3.37% 309P

- **Terza 2 anni junior Nazionale di Cremona 2013 / 3rd Jr 2yr old National show Cremona 2013**
- **Ora in seconda lattazione , iscritta a Cremona 2015 / Just in 2nd lactation and looks great and entered for Cremona 2015**

**Ladys-Manor R.D. SHOUT**

**Bel Goldwyn Queen EX-92-IT**  
Conf. EX-92-IT

4.05 305d 11.481kgM 4.23% 486F 3.39% 389P  
Lifetime: 4La 46.640kgM 4.16%F 3.43%P

- **Sorella materna della Campionessa Mondiale Toc-Farm Allen Amyly EX-96-IT, madre di , dam of GOLDSUN & GLAUCO! / Maternal sister to the World Champion Toc-Farm Allen Amyly EX-95-IT, dam of GOLDSUN & GLAUCO!**

**NEXT DAMS**

- 4e Toc-Farm Progress Amy EX-93-IT
- 5e Sunnlyodge Skychief Amy EX-95-UK
- 6e Sunhlyodge Tab Ann EX-90-CAN EX-93-MS
- 7e Sunnlyodge Prelude Spottie VG-87-CAN

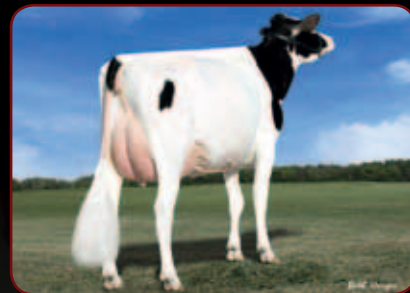
Una delle primissime figlie di Galctico! Genetica fresca da una delle migliori famiglie per tipo e indici nel mondo. La famiglia di Amyly capace di generare con una continuità impressionante tori provati alti a tipo ( Goldsun, Glauco...) e vacche di morfologia superiore spesso vincenti nei ring. Galactico è uno dei tori genomici più popolari della sua generazione e UBA una promettente Mascalese > 2300 GTPI figlia di un'affermata madre di toro in Europa: Bel Shout Samantha VG88. Molte figlie di Samantha sono già andate bene anche nei ring. Maschi in F.A. e femmine in mostra... per continuare una tradizione di famiglia !

One of the very first Galctico daughters! Fresh genetics out of one of the best show type and genomic cow families worldwide: The amyly family! A family breeding consistently high type proven bulls ( Goldsun, Glauco...) and show winner cows. Galactico is one the most popular genomic bulls of its generation and UBA a promising Mascalese > 2300 GTPI daughter of the European renown bull-dam: Bel Shout Samantha VG88. Some Samantha daughters already did well in shows as well. Sons in A.I. and daughters in shows... To maintain a Family Tradition!

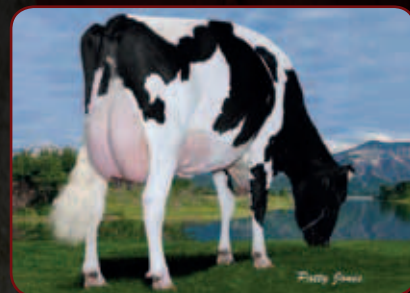




Des-Y-Gen Snowman Selina \*RC VG-85-DE 2yr.



Des-Y-Gen Planet Silk \*RC EX-90-USA



Gen-I-Beq Goldwyn Secret \*RC VG-87-CAN 2yr.

15.


## DG Star \*RC


Reg.no  
Consignor


NL 964580581  
Diamond Genetics

Reg.no

06.12.2014

 IT 08/15 | gPFT +2171  
+1473L -0.07 +0.01 +43G +49P  
109Cell 112Long 96Fert  
1.49Arti 1.89ICM / Tipo +1.34

 US 08/15 | GTPI +2195  
+1312M -0.06% +0.00% +33F +40P  
+2.9PL 2.77SCS +1.2DPR 6.4SCE 426NM  
+0.974UDC +0.57FLC / PTAT +0.91

 CA 08/15 | DGV LPI +2811  
+1825M -0.10 +0.02 +53F +62P  
108HL 2.62SCS 104Fert 106CA  
+6FL +6MS / Conf. +7

**Texel Beauty DEBUTANT RED**  
(Dakker x Superstition)

**Des-Y-Gen Snowman Selina \*RC VG-85-DE 2yr.**  
Conf. 85 87 84 85 / VG-85-DE 2yr.

1st test: 40.3kgM 4.08%F 3.52%P

- **Sorella piena di Sympatico RC @ Semex** / Full sister to Sympatico RC @ Semex
- **Sorella materna di Stoic RC & Seneca RC** / Maternal sister to Stoic RC & Seneca RC
- **Molte figlie nella top 25 GTPI RC / RED manze in Europa** / Several daughters in the top 25 GTPI RC / RED Heifers in Europe
- **La sorella piena è la madre di SUNFISH \*RC @ Masterrind** / Full sister is dam to SUNFISH \*RC @ Masterrind

**Flevo Genetics SNOWMAN**

**Des-Y-Gen Planet Silk \*RC EX-90-USA**  
Conf. EX-90-USA EX-92-MS

2.02 365d 13.603kgM 4.5% 613F 3.2% 435P  
4.01 196d 8.760kgM 4.2% 350F 3.1% 273P inc.

- **Ex vacca RC #1 GTPI nella razza** / Former #1 GTPI RC Cow in the breed
- **Venduta per \$ 1.000.000** / Sold for \$ 1.000.000
- **Madre e nonna di molte femmine ai top delle classifiche RED o RC** / Dam and grand dam to several chart topping RC / Red Heifers

**Ensenada Taboo PLANET**

**Gen-I-Beq Bolton Silence \*RC VG-85-CAN**  
Conf. VG-85-CAN 2yr.

2.04 365d 13.609kgM 4.6% 631F 3.6% 485P  
4.09 365d 13.203kgM 4.1% 357F 3.5% 466P

- **Stessa famiglia di:** / Same family as: Secure Red, Mr Savage, Durham Red, September Storm, Sahara RC, Seaguall & more
- **Next dam is the R&W Global Cow of the Year '11** / Next dam is the R&W Global Cow of the Year '11

**NEXT DAMS**

4e Gen-I-Beq Goldwyn Secret \*RC VG-87-CAN 2yr.  
5e Gen-I-Beq Durham Sherry VG-87-CAN 7\*  
6e Glen Drummond Splendor VG-86-2YR-CAN 38\*  
7e Glen Drummond Aero Flower VG-88-CAN 18\*  
x EX-CAN x EX-CAN x VG-85-USA

## RED Carrier dalla famiglia di Splendor

Una manza RED Carrier dalla famiglia di Splendor! La madre è la sorella piena di Sympatico di Semex, La nonna Des-Y-Gen Planet Silk \*RC EX-90-USA è stata venduta per \$ 1.000.000 ed ha molti figli in FA.

## Red Carrier from the Splendor's

RED CARRIER heifer out of the Splendor cow family! Dam is the full sister to Sympatico @ Semex! Grand dam Des-Y-Gen Planet Silk \*RC EX-90-USA sold for \$ 1.000.000 and has multiple sons in AI!





All Ven Goldwyn Rosie VG-88-IT | Grand dam



3rd dam: Mesland Alh Rosie VG-87-IT



Mat. sister to dam: ATTILA

16.


## All.Ven Megasire Spenta

Reg.no  
Consignor

IT020991005797  
Az.Agr.Venturini

D.O.B.

08-05-2015

 IT 08/15 | gPFT +2620  
+188L +0.32% +0.17% +38G +22P  
111Cell 115Long 111Fert  
3.79Arti 3.12ICM / Tipo +2.72

**Butz-Hill MEGASIRE**  
(Supersire x Man-O-Man)

**All Ven Gisella Gold One VG-85-IT**  
Conf. VG-85-IT

Prod. see sale update

**Amighetti NUMERO UNO**

**All Ven Goldwyn Rosie VG-88-IT**  
Conf. VG-88-IT

2.04 305d 12.386kgM 4.07% 504F 3.65% 452P  
4.08 305d 14.987kgM 3.64% 545F 3.23% 484P

- **Madre di Libu Inseme Attila /**  
Dam of Libu Inseme Attila

**Braedale GOLDWYN**

**Mesland Alh Rosie VG-87-IT**  
Conf. VG-87-IT

2.08 305d 13.422kgM 4.31% 579F 3.83% 514P  
4.11 305d 12.750kgM 4.28% 546F 3.75% 478P

- **s. Stormatic**

**NEXT DAMS**

4e Regan-Joy Durham Regenia EX-92-USA  
5e Sher-Est Emory Swanny EX-90-USA 2E  
6e Sher-Est Prelude Swan EX-91-USA 2E  
7e Sher-Est S-Wind Saturday EX-90-USA  
8e Eng-Our Acres Mark Sandy EX-91-USA  
9e Buena-Vista Tony Sandra EX-91-USA 2E  
10e Buena-Vista Riley Sandy EX-90-USA

### Dalla famiglia di Attila

Una bellissima vitella figlia di Megasire e di una promettente Numero Uno valutata VG 85 di primo parto. La famiglia già famosissima ha conosciuto un nuovo successo con l'uscita dei dati di Agosto 15, che hanno visto Attila raggiungere la vetta tra i tori provati in Italia

### Out of Attila Family

A fancy heifer sired by Megasire out of a highly promising Numero Uno VG85 2 yr. The renowned family is now even more popular after August '15 release when Attila reached the top of gPFT list as proven bull.

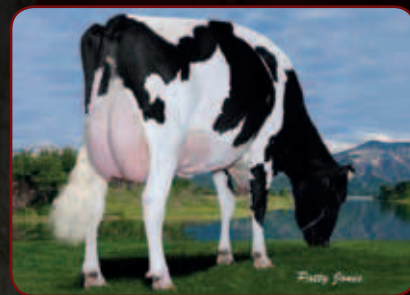




Fily Sher VG-86-FR 2yr.



Des-Y-Gen Planet Silk \*RC EX-90-USA | Same family



Gen-I-Beq Goldwyn Secret \*RC VG-87-CAN 2yr.


17.


## DG SCHREUR *Fina*


Reg.no  
Consignor

NL 747281164  
Diamond Genetics & Schreur Holsteins

Reg.no 19.05.2015

 IT 08/15 | gPFT +3097  
+1526L +0.30 +0.13 +89G +64P  
104Cell 113Long 104Fert  
3.06Arti 2.19ICM / Tipo +2.22

 US 10/15 | GTPI +2556  
+1479M +0.08% +0.04% +76F +55P  
+5.4PL 2.90SCS +3.0DPR 6.7SCE 741NM  
+0.75UDC +0.71FLC / PTAT +1.28

 CA 08/15 | DGV LPI +3263  
+1692M +0.41 +0.18 +105F +74P  
112HL 2.87SCS 110Fert 111CA  
+6FL +7MS / Conf. +8

**Cogent SUPERSHOT**  
(Supersire x Superstition)

**Fily Sher VG-86-NL 2yr.**  
Conf. VG-86-NL 2yr.

2.02 305d 10.799kgM 3.8% 409F 3.1% 335P

- **Sorella piena di Fontoy \*RC @ Evolution** / Full sister to Fontoy \*RC @ Evolution
- **Molte progenie con alti indici** / Several high progenys
- **Una figlia con Kanu P venduta per 10.000 EUR** / Kanu P dtr sold for 10.000 EUR
- **Ha ripartorito recentemente, davvero impressionante** / Calved again and looks very impressive

**Long-Langs MAN-O-MAN**

**Dinas Sher VG-86-FR**  
Conf. VG-86-FR

2.04 305d 11.333kgM 3.8% 432F 3.2% 357P

- **Stessa famiglia di:** / Same family as: Secure-Red, Mr Savage, September Storm, Sahara \*RC, Seaguall, Durham Red, Laron P & others
- **Famiglia parente di Des-Y-Gen Planet Silk \*RC EX-90-USA, madre di Sympatico, Seneca & Stoic** / Close family to Des-Y-Gen Planet Silk \*RC EX-90-USA, dam to Sympatico, Seneca & Stoic

**Emerald-Acr Sa T BAXTER**

**Belis Sher VG-85-FR**  
Conf. VG-85-FR

2.06 305d 11.270kgM 3.7% 412F 3.1% 346P  
3.11 305d 13.486kgM 3.8% 508F 3.1% 413P  
5.01 305d 11.929kgM 3.9% 467F 3.1% 374P

- **Sorella con Bolton venduta per \$ 104.000** / Bolton sister sold for \$ 104.000

**NEXT DAMS**

4e Gen-I-Beq Durham Sherry VG-87-CAN 7\*  
5e Glen Drummond Splendor VG-86-2YR-CAN 38\*  
6e Glen Drummond Aero Flower VG-88-CAN 18\*  
7e Glen Drummond Shower EX-CAN 14\*  
8e Glen Drummond S C Jo Beth EX-CAN 2E 7\*  
9e Glen Drummond Matt Beth VG-85-CAN 4\*  
10e Glen Drummond Marquis Beth VG-CAN  
11e Ferglynn Rag Apple Bertha VG-CAN 3\*

## La famiglia canadese della Splendor

La famiglia canadese di Glen Drummond Splendor! Questa vitella è alta in tutte le classifiche per genomica del mondo e proviene dalla stessa famiglia di tori provati come Sympatico, Seneca, September Storm e molti altri!

## The Canadian Splendor cow family

The Canadian Glen Drummond Splendor cow family! This heifer ranks high in all the systems and comes from the family of proven sires like Sympatico, Seneca, September Storm and many others!





NH Massey Queen Girl



Buttighoffer Beacon Queen 05 VG-85-DE 2yr.



Buttighoffer Beacon Queen 05 VG-85-DE 2yr.


18.


## DV DG DH Superqueen


Reg.no  
Consignor

NL 698585429  
Diamond Genetics, De Volmer & Duindam Holsteins

Reg.no 03.02.2015

 IT 08/15 | gPFT +2937  
+1464L -0.12 +0.02 +38G +51P  
111Cell 114Long 110Fert  
4.35Arti 2.10ICM / Tipo +1.73

 US 10/15 | GTPI +2453  
+1463M -0.02% +0.01% +49F +48P  
+5.9PL 2.68SCS +2.4DPR 7.1SCE 667NM  
+1.02UDC +1.15FLC / PTAT +1.10

 CA 08/15 | DGV LPI +3143  
+1976M -0.08 +0.08 +65F +73P  
113HL 2.52SCS 111Fert 106CA  
+9FL +6MS / Conf. +5

**Cogent SUPERSHOT**  
(Supersire x Superstition)

**NH Massey Queen Girl**  
Due. October 2015 - Looks great

- **Madre del toro #4 GTPI & NM**  
Queenboy: 8/15 GTPI +2711 & NM 939 /  
Dam to the #4 huge GTPI & NM bull  
Queenboy: 8/15 GTPI +2711 & NM 939
- **Prima scelta maschio venduta per EUR**  
92.000 / 1st Choice son sold for EUR 92.000
- **Svariati figli in FA** /  
Several sons in AI till date

**Co-Op Bosside MASSEY**

**Büttighoffer Beacon Queen 05 VG-85-DE 2yr.**  
Conf. VG-85-DE 2yr.

La1 305d 11.003kgM 4.4% 479F 3.8% 419P  
343d 12.094kgM 4.3% 515F 3.8% 457P

- **#1 Beacon in Europa** / #1 Beacon in Europe
- **Svariati figli in FAI** / Several sons in AI
- **Madre di Ipster P @ Genes Diffusion**  
(s. Parker), eccezionale toro POLLED  
/ Dam to Ipster P @ Genes Diffusion  
(s. Parker), huge POLLED bull

**End-Road BEACON**

**Qualle 05 \*TY VG-87-DE 2yr.**  
Conf. VG-87-DE 2yr.

2.04 305j 11.603kgL 4.9%G 564G 3.5%P 409P

- **Sorella piena di Boateng & Borsati** /  
Full sister to Boateng & Borsati
- **La sua seconda madre è stata in passato la**  
**prima vacca in Italia per PFT**  
/ Her 2nd dam is the former #1 index  
cow in Italy

**NEXT DAMS**

4e Quality 17 VG-87-DE  
5e New-Farm Aaron Quantita EX-91-IT  
6e New-Farm Aero Ottima EX-90-IT  
7e Pizz-Farm Leadman Mimma VG-85-IT 2yr.

### Fiurilinea con radici italiane!

Supershot x Massey x Beacon x Bolton x Quality 17 risalente alla famiglia di Quantita dell'allevamento New-Farm in Italia! La terza madre è la sorella piena di Boateng & Borsati! La madre di questo lotto NH Massey Queen Girl è stata venduta per EUR 64.000 e la sua prima scelta maschio per EUR 92.000; si tratta del fratello pieno di questa vitella il quale è >2700 GTPI e NM 939!

### Outcross line with Italian roots!

Supershot x Massey x Beacon x Bolton x Quality 17 going back on the Quantita family from New-Farm Holsteins, Italy! 3rd dam is the full sister to Boateng & Borsati! Dam of this heifer NH Massey Queen Girl sold for EUR 64.000 and her 1st Ch son for EUR 92.000, that's the full brother to this heifer which has >2700 GTPI and NM 939!





Pess Farm Goldwyn Nerz EX-93-IT | Grand dam



Full sister to gr. dam: Pess Farm Goldwyn Nevil Jr. Milking Champion European Show 2010



Grand dam: Pess Farm Garter Fortina EX-93-IT

19.


## Pess Farm Mardi Gras *Umina-ET*

Reg.no  
Consignor

IT 04991373341  
Pess Farm Holsteins

D.O.B.

04-11-2014

 IT 08/15 | gPFT +2939  
+1269L +0.11% +0.05% +60G +48P  
101Cell 119Long 100Fert  
4.73Arti 3.64ICM / Tipo +2.76

**Mr. Moviestar MARDI GRAS**  
(Mogul x Planet)

**Pess Farm Eudon Spagnola**  
Conf. GP-84-IT 2yr.

2.01 264d 11.062kgM 3.2%F 3.0%P (In Corso)

- **Giovane vacca con strepitosa produzione /**  
Very high productive young cow!
- **Direttamente da NERZ !! /**  
Straight out of NERZ!
- **Una delle migliori figlie di Eudon /**  
One of the very best Eudon dtrs

**Go-Farm EUDON**

**Pess Farm Goldwyn Nerz EX-93-IT**  
Conf. EX-93-IT

2.01 305d 11.251kgM 3.4% 379F 3.2% 362P  
3.04 305d 15.139kgM 3.7% 552F 3.1% 465P

- **Riserva cat. 5 anni Nazionale Cremona '13**  
/ 2nd 5yr old class National Show Cremona 2013
- **Campionessa Assoluta regionale Piemonte 2013, 2015 / 2 Times Grand Champion**  
Piemonte regional Show 2013, 2015

**Braedale GOLDWYN**

**Pess Farm Garter Fortina EX-93-IT**  
Conf. EX-93-IT

2.02 305d 12.528kgM 3.4% 429F 3.2% 404P  
3.10 305d 15.395kgM 3.8% 582F 3.2% 497P  
5.05 305d 16.270kgM 3.7% 605F 3.2% 521P  
Lifetime: 5La 130.032kgM 3.91%F 3.43%P

- **Produzioni strepitose /**  
Huge production cow
- **Riserva Categoria Nazionale**  
/ Was 2nd in her class at Cremona National

**NEXT DAMS**

4e Pess Farm Mtoto Eva VG-88-IT  
5e Vinella VG-87-IT (s. Black Buster)

### *Da una famiglia emergente*

Umina è una Mardi Gras pronta da trapiantare sulla migliore Eudon di Pess Farm Nerz EX-93. Nerz è oggi la componente più conosciuta della sempre più emergente famiglia di Fortina. Grandi produzioni prima, eccellenti risultati nelle mostre poi e buona genomica oggi rendono questa famiglia una delle più interessanti della razza in Italia. Una sorella piena di Nerz, Pess Farm Goldwyn Nevil, è stata la Campionessa Vacche giovani al Confronto Europeo 2010 in Cremona.

### *From a rising family*

Umina is a ready to be flushed Mardi Gras out of the best Eudon daughter of Pess Farm Goldwyn Nerz EX93. Nerz is today the most renown member of the rising Fortina cow family. Outstanding productions first, show ring successes then and high genomics now are making this family one of the best of the breed in Italy. A full sister to Nerz, Pess Farm Goldwyn Neville, was Junior Champion at European championship in Cremona 2010.





Same family: Cookiecutter MOM Hue VG-88-CAN 2yr.



Grand dam: Cookiecutter MOM Halo VG-88-USA 2yr.



Maternal sister to dam: Cookiecutter Mogul Hanker


20.


# NEERDUIST DG *Haily*


Reg.no  
Consignor

NL 743560850  
Diamond Genetics & Neerduist Holsteins

Reg.no 07.07.2015

 IT 08/15 | gPFT +2831  
+1624L -0.02 +0.11 +58G +66P  
107Cell 113Long 101Fert  
2.90Arti 1.58ICM / Tipo +1.78

 US 08/15 | GTPI +2464  
+1270M +0.01% +0.03% +50F +46P  
+3.8PL 2.73SCS +0.9DPR 7.1SCE 587NM  
+2.10UDC +1.67FLC / PTAT +2.19

 CA 08/15 | GPA LPI +2992  
+1602M +0.00% +0.11% +59F +63P  
110HL 2.57SCS 106Fert 104CA  
+7FL +9MS / Conf. +10

**Ste Odile PURE**  
(Mogul x Man-O-Man)

**Cookiecutter JC Hawn**

- **Figli e figlie > 2500 & 2600 GTPI** / Sons and daughters > 2500 & 2600 GTPI
- **Sorella di Cookiecutter HALOGEN** / Sister to Cookiecutter HALOGEN!
- **La più alta figlia di Halo** / The highest daughter of Halo

**Coyne-Farms JACEY CRI**

**Cookiecutter MOM Halo VG-88-USA 2yr.**  
Conf. VG-88-USA 2yr. DOM

2.00 365d 16.026kgM 5.2% 1832F 3.5% 1241P

- **Madre del toro ex #1 GTPI Halogen** / Dam to the former #1 GTPI bull, Halogen
- **Vacca di grande trasmissione** / Great transmitting cow

**Long-Langs MAN-O-MAN**

**Cookiecutter Gld Holler VG-88-USA DOM**  
Conf. VG-88-USA

2.03 305d 15.572kgM 3.6% 555F 3.0% 474P

- **Madre di Hefty @ Semex** / Dam to Hefty @ Semex
- **Nonna di Hunter @ CRV** / Grand dam to Hunter @ CRV
- **Nonna di:** / Grand dam to: Cookiecutter MOM Hue, sold for \$ 200.000

#### NEXT DAMS

4e Ms Kings-Rnsm Champ Haley EX-90-USA GMD DOM  
5e Regancrest-JDV Hanna EX-90-USA 5yr. GMD DOM  
6e Long-Haven Rudolph Dee EX-90-USA GMD DOM  
7e Regancrest Elton Disrael VG-88-USA 3yr. GMD DOM  
8e Snow-N Denises Dellia EX-95-USA GMD DOM  
8e Snow-N Dorys Denise EX-90-USA GMD DOM

## La famiglia di Cookiecutter Halo

Bellissimo lotto dalla famiglia di Cookiecutter MOM Halo! La madre è la sorella materna del famoso toro Halogen e della grande razzatrice Cookiecutter Mogul Hanker! La famiglia risale a Snow-N Denises Dellia EX-95, madre di Durham, Dundee and e nonna di Damion!

## The Cookiecutter Halo family

Very nice consignment from the Cookiecutter MOM Halo cow family! Her dam is the maternal sister the popular sire Halogen and to the huge transmitting cow Cookiecutter Mogul Hanker! Goes back on Snow-N Denises Dellia EX-95, dam of Durham, Dundee and grand dam of Damion!





Rose Super Shot VG-88-NL 2yr.



Cogent Supershot | Maternal brother to this lot



Rose Super Shot VG-88-NL 2yr.


**21.**


## DG DV Rosel

Reg.no  
Consignor

NL 947694656  
Diamond Genetics & De Volmer Holsteins

Reg.no 14.07.2015

 **IT 08/15 | gPFT +2901**  
+1091L -0.08 +0.12 +32G +50P  
109Cell 116Long 109Fert  
2.75Arti 2.71ICM / Tipo +2.13

 **US 10/15 | GTPI +2307**  
+931M -0.02% +0.04% +28F +39P  
+5.1PL 2.84SCS +2.8DPR 7.6SCE 509NM  
+1.16UDC +0.68FLC / PTAT +1.30

 **CA 08/15 | DGV LPI +3031**  
+1341M -0.04 +0.16 +44F +62P  
111HL 2.72SCS 111Fert 106CA  
+7FL +9MS / Conf. +9

### Delaberge LOPTIMUM (Shotglass x Planet)

Rose Super Shot VG-88-NL 2yr.  
Conf. VG-88-NL 2yr.

2.10 305d 11.073kgM 4.0% 443F 3.6% 399P  
488d 16.896kgM 4.1% 693F 3.7% 625P

- **Madre di Cogent Supershot! Ex toro #1 NM, GTPI & GLPI nella razza!** / Dam to Cogent Supershot! Former #1 NM, GTPI & GLPI bull in the breed!

### Charlesdale SUPERSTITION

RC Classi VG-87-DE  
Conf. VG-87-DE

La 1 305d 12.398kgM 3.8% 468F 3.8% 465P

- **Madre di AltaBuckaro & AltaHitman** / Dam to AltaBuckaro & AltaHitman
- **Stessa famiglia di Koepon Classy's** / Same family as the Koepon Classy's
- **Stessa famiglia di** / Same family as Southland Carola 11 VG-89-NL 2yr., Res. 2-Yr. Old Champion European Show Fribourg '13

### Picston SHOTTLE

Clas Touch VG-86-DE 2yr.  
Conf. VG-86-DE 2yr.

La 1 200d 8.123kgM 3.8% 311F 3.6% 293P

- **Sister to Calysto, Matron, Olympo, Legal & Clapton** / Sister to Calysto, Matron, Olympo, Legal & Clapton

### NEXT DAMS

4e Tirsvad Patron Claire EX-92-DK  
5e Tirsvad Luke Classic EX-90-DK  
6e Vir-Clar De Classy VG-88-USA GMD DOM  
7e Vir-Clar Miss Rotate Concorde VG-89-USA  
8e Vir-Clar De Wayne VG-88-USA

## Sorella di Supershot!

Cogent SUPERSHOT è uno dei tori più popolari nella razza, questa è la sua sorella materna ed è in vendita !!! Sua madre Rose Super Shot è stata valutata VG-88 a 2 anni e ha una prima lattazione >11.000 kg in 305 gg con 3.6% PROTEINE e alla famiglia americana Vir-Clar de Classy!

## Sister to SUPERSHOT!!

Cogent SUPERSHOT is one of the most popular sires in the breed, this is his maternal sister selling!!! Her dam is the VG-88 2yr. old Rose Super Shot with a 1st lactation >11.000 kg milk in 305 days with 3.6% PROTEIN and goes back on the American Vir-Clar de Classy family!





RZH Brescia P Red VG-86-NL 2yr. | Dam of the embryos



Grand dam: Lookout Pesce A Brava VG-88-CAN



4th dam: Regancrest-PR Barbie EX-92-USA

22.

## 4 Grade A Embryos

# embryos  
Consignor  
Location of embryos

4 embryos: APOLL P RED x RZH Brescia Red P  
De Oosterhof Holsteins & Diamond Genetics  
The Netherlands

Schreur APOLL P Red  
(Aikman x Lawn Boy)

RZH Brescia Red P VG-86-NL 2yr.  
Conf. VG-86-NL 2yr.

2.04 315d 9.198kgM 3.8% 347F 3.5% 319P

- Una delle migliori vacche RED & POLLED al mondo / One of the greatest RED & POLLED cows in the breed
- Campionessa Assoluta Manze Summer Show Beilen '13
- Riserva di categoria Nazionale HHH Show '13
- Venduta per EUR 55.000, HM Sale 2012 / Sold for EUR 55.000, HM Sale 2012
- Molti figli in FA / Several sons in AI

Sandy-Valley COLT P

Lookout Pesce A Brava \*RC VG-88-CAN 4yr.  
Conf. VG-88-CAN 4yr.

2,01 365d 13.179kgM 4.3% 570F 3.2% 421P

- Nonna di Blueprint PP @ Semex / Grand dam to Blueprint PP @ Semex

Golden-Oaks St. ALEXANDER

Regancrest MB Breyell \*RC VG-87-CAN 4yr.  
Conf. VG-87-CAN 4yr.

2.03 365d 14.459kgM 3.1% 451F 3.1% 450P  
4.03 315d 13.459kgM 3.3% 449F 3.1% 415P

- Madre di Redburst @ Semex / Dam to Redburst @ Semex

### NEXT DAMS

- 4e Regancrest Breye EX-90-USA
- 5e Regancrest-PR Barbie EX-92-USA GMD DOM 6\*
- 6e Regancrest Juror Brina EX-92-USA GMD
- 7e Regancrest Aerostar Bert EX-90-USA GMD DOM
- 8e Regancrest Mark Chairman Bea EX-91-USA 2E
- 9e Regancrest Board Chairman Bea EX-90-USA
- 10e Regancrest Apache Standout Bea VG-86-USA

## Red e Polled dalla Barbie!

Una grande combinazione con Apoll P ( Toro Red #1 in Germania) su una delle migliori vacche rosse e Polled della razza: RZH Brescia Red P, vacca che ha vinto molte mostre; sua sorella piena è la madre di Blueprint PP ! Grande sequenza di tori con Alexander, Mr Burns, Shottle e poi la leggendaria Barbie !

## Red, polled, Barbie's!

Great combination with Apoll P (#1 RED bull in Germany) out of one of the greatest RED & Polled cows in the breed: RZH Brescia Red P which won several shows, her full sister is dam of Blueprint PP! Great sire stack with Alexander, Mr Burns, Shottle then Barbie! From the BARBIE cow family!





JK Eder Snowman Cinderella VG-88-NL 2yr.



JK Eder Cindere 4



JK Eder Ciderman @ Ascol  
Full brother to grand dam, former #1 bull in Spain!


23.


## DG JK EDER *Cinty*


Reg.no  
Consignor

NL 747281018  
Diamond Genetics & JK Eder Holsteins

Reg.no 03.04.2015

 IT 08/15 | gPFT +2762  
+1049L +0.20 +0.17 +63G +55P  
106Cell 113Long 105Fert  
2.83Arti 1.77ICM / Tipo +1.84

 US 10/15 | GTPI +2447  
+1156M +0.08% +0.05% +64F +48P  
+4.9PL 2.88SCS +1.1DPR 6.1SCE 645NM  
+1.46UDC +1.58FLC / PTAT +1.61

 CA 08/15 | DGV LPI +3088  
+1291M +0.37 +0.22 +83F +33P  
109HL 2.74SCS 104Fert 110CA  
+12FL +8MS / Conf. +9

Larcrest COMMANDER  
(Mogul x Observer)

JK Eder Cindere 4  
Just fresh, looks great! See Sale update

- #5 GTPI Fanatic World Wide / #5 GTPI Fanatic World Wide
- Former #1 PFT Fanatic in Italy / Former #1 PFT Fanatic in Italy
- Maternal sister to JK Eder Cider \*PO - One of the highest Polled Heifers in Europe / Maternal sister to JK Eder Cider \*PO - One of the highest Polled Heifers in Europe

FANATIC

JK Eder Snowman Cinderella VG-88-NL 2yr.  
Conf. 88FR 86DS 88MS 88FL / VG-88-NL 2yr.

2.02 305d 9.415kgM 3.7% 345F 3.1% 294P

- Full sister to Control @ Semex & Ciderman @ Ascol / Full sister to Control @ Semex & Ciderman @ Ascol
- Sold to Ireland, producing > 70 kg Milk per day! / Sold to Ireland, producing > 70 kg Milk per day!

Flevo Genetics SNOWMAN

Giessen Bolton Cinderella VG-87-NL 2yr.  
Conf. VG-87-NL VG-89-MS 2yr.

2.04 305j 11.603kgL 4.9%G 564G 3.5%P 409P

- VG dtrs in NL, Canada & more / VG dtrs in NL, Canada & more
- Next dam was Int. Champion National HHH Show '10 / Next dam was Int. Champion National HHH Show '10

NEXT DAMS

4e Giessen Cinderella 15 EX-91-NL  
5e Durham Cinderella VG-89-NL  
6e Wilcoxview Cinderella EX-92-USA 3E  
7e Scientific Cindaella VG-88-USA EX-MS  
8e Hanoverhill Tony Rae EX-96-USA 3E GMD DOM  
9e Hanoverhill TT Roxette EX-94-USA 2E GMD DOM  
10e Mil-R-Mor Roxette EX-CAN GMD DOM  
11e C Glenridge Citation Roxy EX-97-USA 4E GMD

## The ROXY'S!

Un incredibile ramo della famiglia Roxy! Questa vitella combina GTPI +2447 con gPFT +2762!! Commander x Fanatic da JK Eder Snowman Cinderella venduta in Irlanda dove ha prodotto >70 kg al giorno nel picco di lattazione! E' la sorella piena di Control @ Semex and Ciderman @ Ascol!

## The ROXY'S!

An incredible branch of the Roxy cow family! This heifer combines GTPI +2447 with gPFT +2762!! Commander x Fanatic from JK Eder Snowman Cinderella which sold to Ireland and produce there >70 kg milk / day on her top! She is the full sister to Control @ Semex and Ciderman @ Ascol!





Caps Mairy 14 VG-85-NL VG-87-MS 2yr.



Caps Mairy 1 VG-85-NL 2yr.



Caps Mairy 4 VG-85-NL 2yr.

24.


## DG CAPS Macey


Reg.no  
Consignor


DE 538920286  
Diamond Genetics & Caps Farm

Reg.no

02.06.2015

 IT 08/15 | gPFT +2874  
+739L +0.40 +0.61 +70G +41P  
110Cell 115Long 108Fert  
2.86Arti 2.44ICM / Tipo +2.47

 US 08/15 | GTPI +2425  
+498M +0.16% +0.06% +64F +32P  
+5.4PL 2.76SCS +2.1DPR 7.5SCE 608NM  
+1.79UDC +1.32FLC / PTAT +1.98

 CA 08/15 | DGV LPI +2955  
+550M +0.59 +0.25 +79F +45P  
109HL 2.65SCS 107Fert 103CA  
+6FL +11MS / Conf. +12

Larcrest COMMANDER  
(Mogul x Observer)

Caps Mairy 14 VG-85-NL 2yr.  
Conf. VG-85-NL VG-87-MS 2yr.

2.06 305d 11.546kgM 4.3%F 500F 3.5%P 398P

- #1 GTPI Jeeves nel mondo / #1 GTPI Jeeves in the World
- Sorella materna di Neidahl @ RSH - #1 Niagra per RZG / Maternal sister to Neidahl @ RSH - #1 Niagra son for RZG
- Stessa famiglia della top-price alla GM Sale , '14 NH HS Marilyn Monroe venduta per EUR 84.000! / Same family as the GM Sale '14 Topseller NH HS Marilyn Monroe for EUR 84.000!
- Sorelle in produzione presso Braedale Holsteins, Canada / Sisters are milking @ Braedale Holsteins, Canada

Ked Outside JEEVES

Caps Mairy 4 VG-85-NL 2yr.  
Conf. VrG-85-NL VG-MS 2yr.

2.05 305d 10.098kgM 4.2%F 428F 3.7%P 370P

- Vacca dalla grande capacità di trasmissione! / Huge transmitting brood cow!
- Molti discendenti alti per GTPI, RZG, NVI ecc. / Multiple high offspring for GTPI, RZG, NVI & more

Breadale GOLDWYN

Caps Mairy 1 VG-85-NL 2yr.  
Conf. VG-85-NL

2.00 305d 10.474kgM 3.7% 392F 3.6% 375P  
3.04 305d 12.548kgM 3.4% 429F 3.7% 468P

- Figli in FA / Sons in AI

NEXT DAMS

- 4e Caps Mairy 1 VG-85-NL 2yr.
- 5e Caps Mairy VG-87-NL VG-89-MS 2yr.
- 6e Agriprize Muffin GP-USA 2yr.
- 7e Jo-Wal Meg VG-86-USA DOM
- 8e Jo-Wal Cleitus Macey VG-87-USA GMD DOM
- 9e Jo-Wal Bell May VG-85-USA GMD DOM
- 10e Jo-Wal Valiant Millie VG-85-USA

### A successo delle Mairy's

Un vitella molto interessante dalla famiglia di Caps Mairy. La madre Caps Mairy 14 è la più alta Jeeves al mondo per GTPI ed è stata venduta per 58.000! Mairy 14 ha molti figli e fratelli in FA nonché molte sorelle di notevole successo in produzione nei più importanti allevamenti del globo.

### The successful Mairy's

Very interesting heifer out of the Caps Mairy cow family! Her dam Caps Mairy 14 is the #1 GTPI Jeeves and sold for EUR 58.000! She has several sons and brothers in AI and has successful sisters milking at several farms around the globe!





Dam: DG My Love



Gr. dam: PG Mylady VG-86-FR VG-86-MS 2yr.



3rd dam: Caps Mairy 4 VG-85-NL 2yr.


25.


## DG OH *Millie* \*PO


Reg.no  
Consignor

NL 747281296  
Diamond Genetics & Rijnhof Holsteins

Reg.no 14.06.2015

 IT 08/15 | gPFT +2693  
+1074L +0.20 +0.22 +62G +58P  
104Cell 114Long 111Fert  
0.36Arti 1.32ICM / Tipo +1.53

 US 10/15 | GTPI +2369  
+787M +0.08% +0.07% +53F +43P  
+4.1PL 2.87SCS +3.1DPR 6.8SCE 574NM  
+0.77UDC +1.12FLC / PTAT +1.19

 CA 08/15 | GPA LPI +2990  
+1545M +0.18 +0.23 +77F +76P  
111HL 2.82SCS 107Fert 104CA  
+3FL +5MS / Conf. +7

### View-Home POWERBALL-P (Earnhardt x Robust)

DG My Love  
Due. October 2015

- **Campionessa manze Ambt Delden 2014 /** Champion Heifer Ambt Delden 2014
- **Sorella piena venduta per EUR 10.000 /** Full sisters sold for EUR 10.000
- **Madre di OH DG Zilver Love, #5 GTPI Silver in Europa (GTPI +2665) /** Dam to OH DG Zilver Love, #5 GTPI Silver dtr in Europe (GTPI +2665)
- **Stessa famiglia della top-price alla GM Sale '14 NH HS Marilyn Monroe venduta per EUR 84.000! /** Same family as the GM Sale '14 Topperseller NH HS Marilyn Monroe for EUR 84.000!

### Seagull-Bay SUPERSIRE

PG Mylady VG-86-FR 2yr.  
Conf. VG-86-FR VG-86-MS 2yr.

2.02 281d 8.421kgM 3.9% 324F 3.57% 301P

- **Venduta alla Ponderosa Holsteins in Spain /** Sold to Ponderosa Holsteins in Spain
- **Sorella piena di Neidahl @ RSH - #1 tra I figli di Niagra per RZG /** Full sister to Neidahl @ RSH - #1 Niagra son for RZG
- **Sorella materna di Caps Mairy 14, #1 GTPI Jeeves nel mondo /** Maternal sister to Caps Mairy 14, #1 GTPI Jeeves in the World
- **Sorelle in produzione presso Braedale Holsteins /** Sisters are milking @ Braedale Holsteins, Canada
- **Dam of DG Inseme Mazzarri @ Inseme IT 10/15 gPFT +3035**

### Ri-Val-Re 2338 NIAGRA

Caps Mairy 4 VG-85-NL 2yr.  
Conf. VG-85-NL VG-MS 2yr.

2.05 305d 10.098kgM 4.2%F 428F 3.7%P 370P

- **Vacca che ha trasmesso moltissimo /** Huge transmitting brood cow!
- **Molti discendenti alti per GTPI, RZG, NVI & more /** Multiple high offspring for GTPI, RZG, NVI & more

### NEXT DAMS

4e Caps Mairy 1 VG-85-NL 2yr.  
5e Caps Mairy VG-87-NL VG-89-MS 2yr.  
6e Agriprize Muffin GP-USA 2yr.  
7e Jo-Wal Meg VG-86-USA DOM  
8e Jo-Wal Cleitus Macey VG-87-USA GMD DOM  
9e Jo-Wal Bell May VG-85-USA GMD DOM  
10e Jo-Wal Valiant Millie VG-85-USA

## Polled dalle Caps Mairy

Una delle più alte vitelle polled per gPFT +2693 e GTPI +2369 ! Le sue origini risalgono alla famiglia di Caps Mairy. Caps Mairy 4 è un gigante genomico ed ha delle figlie nei migliori allevamenti del mondo tra cui Braedale Holsteins in Canada; una famiglia che funziona ovunque !

## Polled from the Caps Mairy's

One of the highest Polled gPFT heifers with gPFT +2693 and GTPI +2369! Going back on the Caps Mairy cow family. Caps Mairy 4 is a genomic giant and has progeny at great farms like Braedale Holsteins in Canada and more, and they perform everywhere!



# TERMINI & CONDIZIONI

- 1 Le presenti condizioni generali si applicano per ogni transazione avvenuta durante questa asta.
2. In caso di controversie sarà applicata la legge olandese. Foro di Arnhem, Paesi Bassi
3. La vendita avverrà per innalzamento delle offerte. I prezzi sono IVA esclusa.
4. La commissione acquirenti è del 7% (IVA escl.).
5. L'asta Italian Style Sale è gestita da Diamond Genetica BV, che sarà denominato "organizzatore dell'asta".
6. La parte venditrice degli animali sarà indicato come il "venditore", la parte acquirente come il "acquirente".
7. L'organizzatore dell'asta in tutti i casi è un intermediario che stabilisce un accordo tra venditore e acquirente.
- 8 Le offerte saranno espresse in .
9. Ogni offerente è vincolato alla sua offerta fino all'accettazione di un'offerta superiore.
10. L'aggiudicazione della vendita è determinata dal colpo di martello del banditore. In caso di controversia, il banditore stesso deciderà chi ha acquistato il lotto
11. Dei numeri per contrassegnare i potenziali offerenti possono essere ottenuti prima e durante la vendita presso l'organizzatore dell'asta. Si prega di utilizzare i numeri di offerta in ogni momento per favorire il chiaro svolgimento dell'asta.
12. Nel caso in cui il banditore faccia un errore, egli ha il diritto di correggere quell'errore e riaprire la gara.
13. L'organizzazione di vendita può organizzare il trasporto e l'esportazione addebitando i costi all'acquirente.
14. L'acquirente che volesse esportare gli animali al di fuori dell'Italia deve informare immediatamente dopo la vendita l'organizzatore dell'asta. L'esportazione può essere organizzata da Diamond Genetics.
15. Tutti gli animali sono testati negativi per IBR, BVD e PARATUBERCOLASI e provengono da allevamenti indenni per leptospirosi.
16. I reclami in merito ad esiti su test sanitari devono essere presentati entro 30 giorni dalla vendita.
17. Gli animali che vengono venduti in stato di gravidanza saranno dichiarati all'interno del catalogo o su un aggiornamento dello stesso. Eventuali contestazioni su tale dichiarazione dovranno essere scortate da una dichiarazione scritta da parte del veterinario accertatore e presentate all'organizzatore dell'asta entro e non oltre 30 giorni dalla data dello svolgimento dell'asta. Tutti i costi sono a carico dell'acquirente. Il venditore e l'organizzatore dell'asta non possono comunque essere ritenuti responsabili.
18. Tutti gli acquirenti sono obbligati ad utilizzare un SEPA europea Incasso (recupero crediti). Tutti gli animali venduti restano di proprietà del venditore fino a quando l'acquirente non ha assolto tutti i doveri che accompagnano l'acquisto.
19. Quando l'acquirente non dovesse rispettare tutte le condizioni per l'acquirente, tutte le spese legali saranno a spese dell'acquirente stesso.
20. Gli acquirenti di prima scelta su vitelle nate da gravidanze in corso o future devono pagare un acconto del 25% del prezzo di aggiudicazione e l'intera commissione d'asta immediatamente dopo la chiusura dell'asta. L'acquirente farà la sua scelta entro i primi 3 mesi di vita del soggetto acquistato o comunque entro 14 giorni dalla ricezione dei risultati dei test genomici. A questo punto il restante 75% del prezzo di vendita sarà pagato alla organizzatore dell'asta. In caso non vi siano vitelle vive tra cui scegliere il venditore è autorizzato a negoziare, in stretta consultazione con l'acquirente, una vitella sostitutiva. Se nessun accordo di sostituzione sarà raggiunto tra venditore e acquirente, il deposito del 25% e la commissione saranno rimborsati.
21. Grande cura è stata presa per ottenere informazioni corrette sugli animali in vendita, tuttavia l'organizzatore non può mai essere ritenuta responsabile o imputabile per eventuali errori all'interno del catalogo.
22. L'organizzatore dell'asta non può essere ritenuta responsabile o imputabile per qualsiasi difetto visibile o non visibile riscontrati nell'animale venduto o consegnato. Non importa la dimensione o la natura dei difetti.
23. L'organizzazione di vendita non può essere ritenuta responsabile o imputabile per qualsiasi danno a persone o beni collegati all'asta.
24. L'organizzazione di vendita non può essere ritenuta responsabile o imputabile per qualsiasi contratto offerto con la vendita di un lotto, la responsabilità è dell'azienda o privato che offre il contratto.
25. Tutti gli animali sono stati controllati da un veterinario ufficiale e dichiarati in buona salute
26. Nel caso di un acquisto annullato a causa di un difetto visibile o non visibile riscontrato sull'animale, i costi di asta rimangono a carico del venditore e acquirente. Le spese veterinarie sono a carico del compratore, il danno può ammontare al massimo allo stesso importo del prezzo di acquisto. Venditore e l'organizzatore non possono mai essere ritenuti responsabili per danni secondari.
27. Ogni offerente è tenuto a prendere visione delle condizioni di vendita all'asta. L'atto di puntare un'offerta su un lotto in vendita implica la conoscenza e l'accettazione di queste condizioni.
1. These general terms and conditions apply for every agreement made through this sale.
2. Dutch law applies to this sale. Court: Arnhem, The Netherlands
3. The sale will take place by increasing bids. The prices are excluding VAT.
4. The buyers commission is 7% (Excl. VAT) .
5. The Italian Style Sale is managed by Diamond Genetics B.V. which will be referred to as the "sale organisation".
6. The consignor of the animals will be indicated as the "seller", the purchaser as the "buyer".
7. The sale organisation in all cases, is an intermediary, accomplishing an agreement between seller and buyer.
8. Bids will be taken in Euros.
9. Every bidder is bound to his bid until a higher bid has been taken.
10. The sale agreement is final on the drop of the auctioneer's hammer. In case of a dispute, auctioneer will decide who bought the lot
11. Bid numbers can be obtained before and during the sale from the sales management team. Please use bid numbers at all times to assist sale organisation.
12. In the case that the auctioneer makes a mistake, he has the right to correct that mistake and reopen the bidding.
13. The sale organisation can arrange transport and export at the cost of the buyer.
14. Buyers of animals that wish to export the animals outside the Netherlands must inform the sales organisation immediately after the sale. The export can be organised by Diamond Genetics.
15. All animals are tested negative for IBR, BVD and PARA and are from Lepto free certified herds.
16. Claims concerning veterinary results should be lodged within 30 days of the sale.
17. Animals that are sold in-calf will be declared within the catalogue or sale update. Reclamations based on this subject (and other subjects) have to be lodged with the sale organisation within 30 days of the auction date, along with a veterinary declaration. All the costs are for the buyer. The seller and the organisation can never held be responsible.
18. All buyers are obliged to use a SEPA European Incasso (debt collection). All sold animals remain the ownership of the seller until the buyer has fulfilled all duties accompanied with the purchase.
19. When the buyer does not fulfil all buyers' conditions, all legal costs will be at the expense of the buyer.
20. Buyers of first choice heifers shall pay a deposit of 25% of the sales price along with the complete sale commission immediately, following the end of the auction sale. The buyer will make his choice of calf on or before three months of age, or within 14 days of receiving the genomic test results. At this point the remaining 75% of the sales price has to be paid to the sale organisation. In the event of no heifer calves being born, the seller is allowed to negotiate, in close consultation with the buyer, a replacement heifer calf. If no agreement can be made between the seller and buyer, the 25% deposit and sale commission will be refunded.
21. Great care has been taken to obtain correct sale information, however the organisation can never be held responsible or accountable for mistakes within the catalogue.
22. The sale organisation cannot be held responsible or accountable for any visible or non-visible defects related to the sold animal or delivered animal, no matter the size or scale of the defects.
23. The sale organisation cannot be held responsible or accountable for any damage to any persons or possessions that are connected to the sale.
24. The sale organisation cannot be held responsible or accountable for any contracts offered with a sale animal, the responsibility is with the organisation offering the contract.
25. All animals have been inspected by an official Veterinarian and declared in good health
26. In the case of a purchase being cancelled due to visible or non-visible defects, the sale costs remain the responsibility of the seller and buyer. The veterinary costs remain the property of the buyer, the maximum damage is the amount of the purchase price. Seller and organisation can never be held responsible for secondary damage.
27. Every bidder is bound to conform to the auction sale conditions. The act of bidding implicates knowledge and acceptance of these conditions.



# Making the **BEST GENETICS** available!



**RZH Snowman Lynn VG-87-NL 2yr.**  
Multiple high sons at international AI stations



**Vekis DG NH Lisha Red PP**  
#1 Homozygous Polled heifer World Wide, RZG 156



**Supershot @ Cogent**  
Bred by de Volmer Holsteins & Diamond Genetics

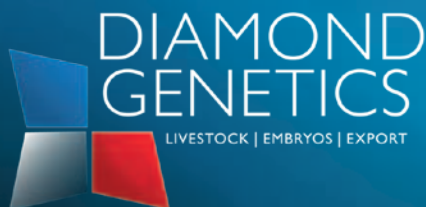


**Vekis Chevrolet @ CRV**  
Delivered by Diamond Genetics

- *We source the genetics you are looking for* • *Bulls, Embryos, Livestock* •
- *Service until the final destination* •



**SUPERSHOT** on his way to the Cogent barns

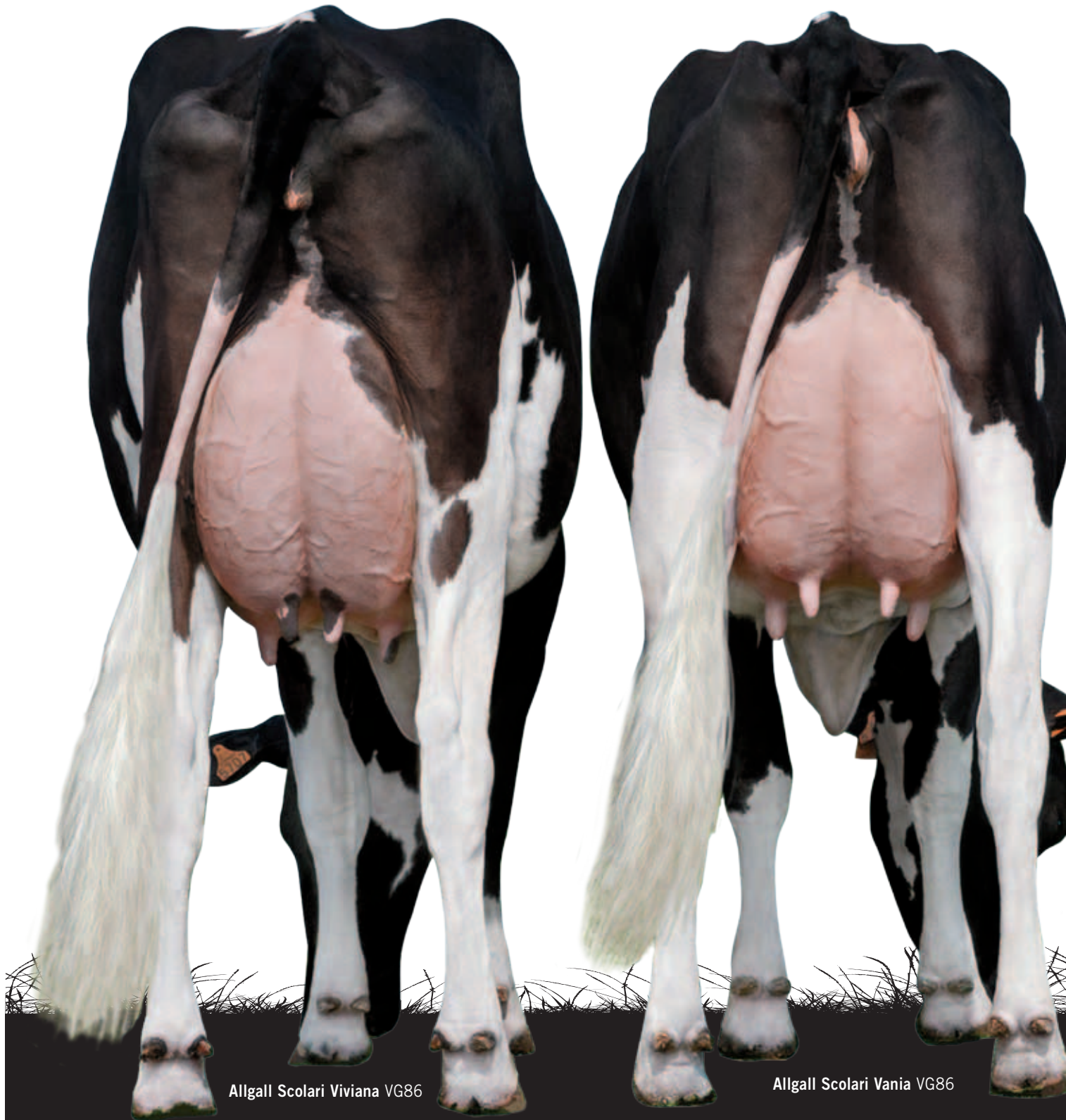


Diamond Genetics  
Wipstrikkerallee 95 | 8023 DW Zwolle | The Netherlands  
Tel. +31 (0)38 4606922  
Email. info@diamond-genetics.nl

[www.diamondgenetics.nl](http://www.diamondgenetics.nl)



# SCOLARI



Allgall Scolari Viviana VG86

Allgall Scolari Vania VG86

***#1 GPFT sire in Italy - Tremendous longevity  
High fat &***

T. +39.0522.271139 / [www.semenzoo.it](http://www.semenzoo.it) / [semenzoo@semenzoo.it](mailto:semenzoo@semenzoo.it)



ROYAL JEEV. SCOLARI ET TV TL TY - IT020990514352

Jeeves x Royal Goldwyn Melinda VG88 x Gen-I-Beq Champion Shine VG87

*italian style*



Allgall Scolari Vanessa VG86

Allgall Scolari Veneta VG85

*ity - Fertility Improver - Great Locomotion*

*Protein %*

**Semenzoo** italy



# WWW.SHOPEMBRYO.COM

Now Open!  
**SHOPEMBRYO.COM**



**24/7**

YOUR SOURCE FOR THE BEST NORTH AMERICAN & EUROPEAN GENETICS



Learn about our products and services, including our 24-hour online shop, and contact us for more information.



Home



Contact Us



24-Hour Online Shop

NOW OPEN YOUR 24-HOUR EMBRYO WEBSHOP  
[SHOPEMBRYO.COM](http://SHOPEMBRYO.COM)





# Rodanas



**GPFT 3314**

**GTPI 2487**

**GLPI 2968**

**HOLBRA INSEME RODANAS TV TL TY**  
NL000884054393  
DDOORMAN  
X HOLBRA SANA (SNOWMAN)  
X HOLBRA PAULONA TY (BOLTON)

# Duomilia

**GPFT 3301**

**GTPI 2383**

**GLPI 2913**

**VENDAIRY DUOMILIA TV TL TY**  
NL000767438432  
ENFORCER  
X HONDA (BOOKEM)  
X FAGA (THELO)



*the fine art of genetics*

*italian style*

[www.semenzoo.it](http://www.semenzoo.it) [semenzoo@semenzoo.it](mailto:semenzoo@semenzoo.it)

**Semenzoo** italy



# Galactico



**GPFT 3064**

**GTPI 2411**

**GLPI 2798**

**GALACTICO ET TV TL TY**

DE000356670067

GALAXY

X VAL-BISSON BOOKEM DONA ET (BOOKEM)

X VAL-BISSON SHT IMELDA TV TY TL (SHOTTLE)

# Fontaine

**GPFT 3122**

**GTPI 2318**

**GLPI 2764**



**TOC-FARM FONTAINE ET TV TL TY**

IT053990116241

DOORMAN

X TOC-FARM SNOW FLORA ET (SNOWMAN)

X QUALITY GOLDWYN FLANSCO (GOLDWYN)

*the fine art of genetics*

*italian style*

[www.semenzoo.it](http://www.semenzoo.it) [semenzoo@semenzoo.it](mailto:semenzoo@semenzoo.it)

**Semenzoo** italy